



Eucalyptus Endangered?

Natural Areas Program EIR gets the OK from the Planning Commission 2

Police Crime Report

Update on Officer Downs and Officer involved shooting in Taraval District 9

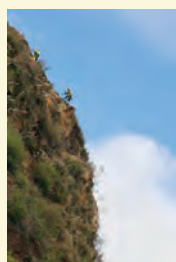


Quentin Kopp

The Central Subway, Transbay Terminal, Mayor Lee, teachers, all get a scolding ... 3

Water Watch

Steve Lawrence celebrates the end of the drought, but new problems surface 5



Stormy Weather: Rockslides Close O'Shaughnessy Blvd

Public Works to the rescue 3

The Mayor's Hiring Binge

Intrepid Patrick Monette-Shaw wonders who's watching the store? 7

WESTSIDE OBSERVER

Volume 30 • Number 1

Celebrating Our 30th Year

www.westsideobserver.com

February 2017

Will Honesty and Sanity Save Laguna Honda?

By Dr. Maria Rivero and Dr. Derek Kerr



Eugene Jeandeville

On 1/10/17 Laguna Honda Hospital (LHH) CEO Mivic Hirose disclosed a State citation and \$100,000 fine for the accidental death of a patient. It was 85 year old Eugene Jeandeville. "Gene" had lived at LHH since 2004 due to dementia complicated by leg weakness and falls. During a movie outing in November 2014, he was briefly left unattended in his wheelchair. It was parked on an incline. He fell head-first from the rolling wheelchair whose brakes hadn't been locked. Two weeks later, Gene died from the resulting traumatic brain injury according to California Department of Public Health (CDPH) records. The incident was harrowing for his many devoted caregivers at Laguna Honda. Yet, it mystified his old friends whose inquiries met evasions. Worried that "something was being hushed up," some contacted the *Westside Observer*.

The WSO has tracked the case since our "Requiem for an Old Friend" reported on April 2015.

Commendably, LHH disclosed the State investigation of the accident, the penalty imposed, and the corrective actions the hospital has taken – before the CDPH issued its Press Release¹ on 1/19/17. The CDPH notifies the media about Class AA citations, the most severe, whose fines range from \$25,000 to \$100,000. Surprisingly, LHH's own revelation occurred at its public Joint Conference Committee meeting – a forum usually orchestrated

to conceal lapses, spin controversies and celebrate trivia. It took 2 years, partly due to a backlog in the City Medical Examiner's Office, the bureaucratic pace of State regulators and the gravity of the case. Still, LHH's public disclosure could mark a notch toward honest accountability. Adverse outcomes, though rare, occur in all hospitals. Airing them publicly is dreaded and difficult. Doing so shows

Cont. p. 4



Landmarking Closer for Iconic El Rey Theater

Ocean Avenue's former El Rey Theater was designed in the Art Deco style by master architect Timothy Pflueger and opened in 1931. Designation as an historic landmark was initiated by unanimous vote of the Historic Preservation Commission at its meeting on January 18. The 1,800seat El Rey is one of San Francisco's only Art Deco movie theaters and the biggest in the West of Twin Peaks area. Soaring above

Cont. p. 16

The Times They Are A Changin'

By John Farrell

It's a new year. We have a new President. As Bob Dylan sang out, "The times they are a changing." Our City has flourished over the past several years as money has been coming in hand over fist. Our tax revenues have increased substantially as tourism and the tech industry boomed, and buildings seemed to pop up overnight, changing the character of our neighborhoods. Further, more than 5000 government jobs have been added since 2011.



“...with the change in Presidency, we need to develop future plans to ensure vital city services are met. It's great the Warriors are building a new stadium, but we must stop the exodus of families from our city.”

The Mayor's FY2016-17 budget of \$9.6 billion was \$1 billion more than it was two years ago, yet basic issues such as safety, housing affordability and homelessness seem worse than ever. And the budget wasn't even balanced, since it depended on an increase in the sales tax that the voters rejected. Now with our new President our City revenues are expecting to lose at least \$1 billion in federal monies as the ramification of being a Sanctuary City. There are many signs that the economy is slowing down. As you might have read, our City has a projected deficit in FY2017-18 and the Mayor has asked our city departments to cut up to 3% of their budgets in order to balance the City's budget. Or put another way, live in the present. No plan for the future. It's just dumb to cut departments 3% across the board. Especially revenue generating departments. I have a better idea. It is called accountability. We need to run the City like a real business and stop the waste. This is the perfect time for the City to do a zero-based budget and start being accountable before the next bubble bursts. The Board of Supervisors should immediately direct Budget Analyst Harvey Rose to conduct a zero-base budget.

As I've mentioned in previous articles, in good times programs and services are not as scrutinized in the budget process as they would be in a recession or depression. Keep in mind everything is cyclical. And with the uncertainty with the change in Presidency, we need to develop future plans to ensure vital city services are met. It's great the Warriors are building a new stadium, but we must stop the exodus of families from our city.

...Yes, the times they are a changin'. But I expect nothing less of the greatest city in the world to meet these issues head on with our head held high.

**Come gather 'round people
Wherever you roam.**

**Let's stand up for families
Before they are gone.**

**Our neighborhoods need safety
From break-ins and crime.**

We need affordable housing.

It's about time.

**For the times they are a changin'
—Sorry Bob.**

John Farrell, MBA, Former City Asst. Assessor-Budget/Special Projects, father, Westside resident. farrellreinvestments@yahoo.com

Can You Afford to Live in San Francisco?

By George Wooding

As San Francisco's general taxes, special taxes, property taxes, parcel taxes, and assorted fees rise to feed an insatiable City government budget appetite, seniors, middle-income families, low-income workers, and small businesses are being starved, forced to move out of the City.

Depending on your age and income, you may be among the next residents forced out of the City.

City budget overseer's — the Board of Supervisors and Mayor Ed Lee — have been derelict in their responsibilities to voters and City residents.

As I stated in my September article, *Where Does The Money Go?* "San Francisco's FY 2016-2017 fiscal budget just increased by \$700 million, to \$9.6 billion. A million here, a million there and now we're talking 'real' money. What's the difference in the City by the Bay? If passed, the City budget will have grown by 41% since FY 2010-2011. San Francisco's annual budget is already larger than the budgets of 20 states."

Mayor Lee has been spending City money like a drunken sailor since he was appointed by the Board of Supervisors on January 11, 2011 to serve out the remainder of former Mayor Gavin Newsom's second term, and assumed his predecessor's final budget.

Lee's financial guidance was provided to him by high-tech companies, former San Francisco politicians, Rose Pak, and a sundry of other current professional politicians, lobbyists, developers, foreign entrepreneurs, and SPUR.

The people's job is to pay, not get in the way. Subsequently, advice from citizens has little value. If someone did ask an average citizen if it would be wise to increase the San Francisco budget by \$700 million in one year — \$58.33 million monthly — they probably would say "No."

People who live within their means typically don't run up their credit card bills an extra \$25,000 a month. Why should City government run up an extra \$58 million monthly?

Where's the Beef?

San Francisco revenue generation is constrained by requirements of California's 1997 Proposition 218 to generate new taxes.

In order to impose or increase a tax, local governments must comply with the following provisions:

- All general taxes must be approved by a

simple (50%+1) majority vote of the people. General taxes go into the general fund.

- Elections for general taxes must be consolidated with a regularly-scheduled election for members of the local governing body, in our case for Board of Supervisors and other elected officials' elections.

- Any tax imposed for a specific purpose is a "special tax," even if its funds are placed into the community's General Fund. Proposition 218 defines a special benefit as a particular benefit to land and buildings, not a general benefit to the public or a general increase in property values. If a project or service would not provide such a special benefit.

The City has been trying to bypass Proposition 218 "special tax" requirements by passing (50%+1) general taxes, and then taking the money that goes into San Francisco's General Fund by earmarking the money as dedicated set-asides designated for a specific purpose.

In last November's general election, Mayor Lee and Supervisor Mark Farrell wanted to increase San Francisco's sales tax by using a general tax (50%+1) by passing Proposition K.

Cont. p. 4



Foam Core —

NO MORE!

Page 2

Love ‘em or hate ‘em, eucalyptus trees still remain at center of controversy

By Glenn Rogers

In a victory for conservation, on December 15, 2016, the Planning Commission voted 6-1, to approve the Environmental Impact Report (EIR) of the Natural Area Program (NAP). The intent of this program is to return CA native plants back to San Francisco, lost by urbanization. Typically, plants from San Bruno Mt. will be planted in this program. That is because San Bruno Mt. contains the last vestiges of plants once found in San Francisco. Many of the plants, and the fauna that depend on them exclusively, are endangered.



“The main concern on Mt. Davidson has been the prevalence of non-native species (eucalyptus, English ivy and Himalayan blackberry), which have driven out the characteristic native plants. At the hearing, numerous members of the public portrayed the desire to remove the eucalyptus trees as an act of xenophobia.”

Many of those making comments at the Planning Commission needed to go to the anteroom on the first floor, watching the hearing on closed TV for hours, before finally being able to enter the Planning Commission Chamber to speak. There were 74 people that spoke in favor of NAP, (including 17 who wanted the Sharp Park Golf Course removed from the EIR) and 42 spoke opposing the NAP outright. Sharp Park, located in Pacifica but included in this study, is 120 acres of land bequeathed to the City of San Francisco in 1917 by the widow of George Sharp (Honora). The park consists of a golf course overlaid on a natural area adjacent the ocean. The non-native grass of the golf course requires pesticides, herbicides and fertilizers which are affecting wildlife and tainting nearby water, causing genetic mutations. Maintaining the Sharp Park Golf Course has been the responsibility of San Francisco’s Recreation and Park Department for years. There have been numerous incidents of endangered wildlife being killed by mowing the lawn or gopher control. The endangered wildlife protected here are the Red Legged Frog and the San Francisco Garter Snake. Therefore, the wild lands surrounding the golf course have been included in the EIR of the Natural Area Program.

The main concern on Mt. Davidson has been the prevalence of non-native species (eucalyptus, English ivy and Himalayan blackberry), which have driven out the characteristic native plants. At the hearing, numerous members of the public portrayed the desire to remove the eucalyptus trees as an act of xenophobia. Those with this position ignored the agent that poisons the ground, in the oil of the eucalyptus. This agent, called allelopathy, inhibits other plants from growing underneath eucalyptus trees, creating both a monoculture of plant growth, as well as a lack of habitat for fauna. Other plants that have this strategy for survival are the Creosote Bush, Walnut Tree and the California Bay. On Mt. Davidson, crews remove leaves of the eucalyptus from the ground regularly to allow an understory of native species to grow there. However, the residue of the oil of the eucalyptus trees has still affected the fertility of the soil, back before the Natural Areas Program started the leaf removal. No doubt this accounts for some of the lack of success for the reintroduction of native plants. Another point those defending the eucalyptus trees made was that to remove these trees would release a tremendous amount of carbon sequestered or stored in the wood, resulting in Global Warming.



A worker applies pesticides at Mt. Davidson Photo: Anastasia Glikshtern (See Letters to the Editor)

A study of these trees measured that 85% are in poor health. It would seem that left alone, which was often the request of those protecting the trees, could result in fire. Possibly, as soon as a 100 years from now, all that carbon could be released into the atmosphere instantly anyway. Remember eucalyptus trees that fueled the fire in Oakland? A short list of those that supported the Natural Area Program in testimony were: Nature in the City, Livable City, the California Native Plant Society and the Sierra Club. Glenn Rogers is a landscape architect who lives in the Westside.



City Moves to Ban Polystyrene

By Tony Taylor

Zero waste sent to landfills by 2020 is the goal of the Board of Supervisors and Mayor Ed Lee. As of January 1, 2017, the sale of food service ware and packing materials made from polystyrene foam is prohibited. So, in other words, no more hazardous styrofoam.

The city unanimously passed an ordinance banning the sale or distribution of any product made in whole or in part, from polystyrene, a plastic-based petroleum compound with a high carbon dioxide footprint. The existence of polystyrene is dependent on the burning of fossil fuels. The ordinance also requires that packing materials and disposable food ware sold or distributed must be accepted as compostable or recyclable in the City’s collection programs.

In San Francisco, over half of what still goes in the landfill bins can be recycled in the blue bin or composted in the green bin. When all material is sent to the correct bins, San Francisco’s diversion rate can increase from 80 percent to 90 percent. “I applaud Recology, the Department of Environment and San Franciscans for reaching this record milestone of 80 percent diversion,” said Mayor Lee in a news release.

By restricting the use of polystyrene foam and requiring it to be replaced with less-hazardous, compostable, or readily recyclable products, the public health and safety of San Francisco’s residents, natural environment, waterways and wildlife will be further protected.

Products made of polystyrene include disposable cups, plates, beach and pool toys, egg cartons, packing materials like peanuts, to-go containers, day-use coolers, foam dock floats and mooring buoys.

Effective July 1, 2017, polystyrene trays used in meat and fish packaging will be banned.

Recycling creates ten times as many jobs as sending material to landfill, According to the U.S. Environmental Protection Agency. In the US Study from Blue Green Alliance, if all cities in the United States recycled and composted like San Francisco it would create 2.3 million jobs.

“Recycling and composting is not only good for our environment, it is also good for our economy,” said Mayor Lee.

“Recycling alone creates 10 times more jobs than simply sending refuse to the landfill.”

San Francisco’s ordinance is now the most expansive ban on polystyrene in the country. Over 97 Californian cities and counties, including 20 cities in the Bay Area, have banned its use. San Francisco has already set a North American record for recycling and composting.

Berkeley was the first to ban polystyrene in 1988. And since 2007, San Francisco has prohibited its use in all to-go food containers.

More than 100 U.S. cities have ordinances restricting the use of materials containing polystyrene.

“Unlike harder plastics, polystyrene contains a chemical used in the production process called ‘styrene’ which will metabolize if ingested. The food chains contamination trickles to humans who consume contaminated marine wildlife.”

Global plastic production has increased 20-fold since 1964 and production is expected to triple again by 2050.

Our consumption habits have consequences. 86 percent of plastic packaging is single use only, representing over \$80 billion in lost value annually, according to the Clean Water Action organization.

Packaging and single use disposable products are ubiquitous in marine debris and represent an unsustainable use of precious resources like oil, trees and water.

The Regional Water Control Board has recognized product bans as an effective way to prevent trash pollution in our waterways.

Because it doesn’t break down in a human time scale, polystyrene can persist for hundreds and thousands of years, compromising the soil, water and air. It breaks down into thousands of tiny non-biodegradable pieces, polluting waterways and littering landscapes.

Though it never completely breaks down in landfills, polystyrene can decompose in the oceans. It eventually sinks making it difficult to know how much of it exists.

Polystyrene foam, often broken down into smaller pieces, is one of the most

Cont. p. 4



The Commission on the Environment

Will Durst	5	Magnolias!	10	Remember When	16
Letters	5	Around the Town	11	Open Late/Brain Füd	16
Barberini	6	Calendar	12	Sudoku	16
New Laws 2017	7	Theater	13	Education/Kocivar	17
Money Matters	8	Senior Smart	14	Health Matters	18
SF PUC/Browne	8	Jack Kaye	15	Real Travel /Nibbi	19

Rockslides Close O'Shaughnessy Blvd



Public Works crews work to stabilize the hillside along O'Shaughnessy Boulevard between Malta Drive and Del Vale Avenue

Recent storms forced the closure of O'Shaughnessy to traffic, including the 44-O'Shaughnessy Muni bus line, that was temporarily detoured while Public Works crews stabilize a cliff that has been eroding in recent rain storm. There have been no reports of injury or property damage.

The rocky slope in danger of sliding is situated on the west side of O'Shaughnessy across from Glen Canyon Park. Geologists assessed the hillside for potential

rockslides, and recommended that loose rocks near the top be knocked away. Work crews began knocking loose rock off of the hillside beginning on January 19.

Geologists will conduct a thorough study of the area after the O'Shaughnessy area is stabilized, though more rains and winds could cause closures in the area again, until the department develops a long term solution.



February 22 | Tuesday | 7 – 8 pm

Ratepayer Education Community Meeting

How much do you know about the refuse rate and its processes? Learn more about how garbage rates are set and the process. A representative from Ratepayer AdvocateSF will give a short presentation and answer any questions. Ortega Library | 3223 Ortega Street and 39th Avenue. For more information, please contact Josh Gray at jgray@ratepayeradvocatesf.org

Do you qualify for a No Charge Curbside Collection?

No Charge Residential Curbside Collection



- The BulkyltemRecycling.com - No Charge Residential Curbside Collection program is only available to SF residents.
- Participating properties must have an active residential or apartment account with Recology Sunset Scavenger or Recology Golden Gate.
- The account must be active for minimum of 30 days.

Recology Sunset Scavenger (415) 330-1300
Recology Golden Gate(415) 626-4000

Ruminations From a Former Supervisor By Quentin Kopp



Walter Lippmann was a *New York Times* columnist in the 20th century, who wrote mostly about national issues and politicians. In 1935 he published “*Essays in the Public Philosophy*.” One essay applies nationally, if not locally and statewide, today: “In government offices which are sensitive to the vehemence and passion of mass sentiment public men have no sure tenure. They are in effect perpetual office seekers, always on trial for their political lives, always required to court their restless constituents. They are deprived of their independence. Democratic officials rarely feel they can afford the luxury of telling the whole truth to the people. And since not telling it, though prudent, is uncomfortable, they find it easier if they themselves do not have to hear too often too much of the sour truth. The men under them who report and collect the news come to realize in their turn that it is safer to be wrong before it has become fashionable to be right.”

“The announced taxpayer cost is \$1,600,000,000; the “sour truth” as calculated by the County Transportation Authority’s own consultant means at least \$2,100,000,000 and an August, 2019 opening, not 2018. Moreover, the same geniuses want to close Union Square to motor vehicles.”

A concomitant of shielding the public from “the sour truth,” a delicious phrase, is the muddling of words and speech. It starts with innocuous words such as “like” and “you know.” It includes beginning every sentence with “So.” A letter to the *Wall Street Journal* on February 12, 2004 made the point: “Anyone who thinks ‘like’ has its place in business conversation ought not to be teaching English in public schools, universities or anywhere else.” That raises at least one issue akin to “the sour truth”: what is in fact taught in public schools? One answer may be found in a study by University of North Carolina professor Bruce VanSledright who discovered that 88% of elementary school teachers consider teaching history a low priority, that there was some ‘holiday curriculum as history instruction,’ but little or nothing else. (See *New York Post*, January 23, 2016). A *New York Post* writer reported her third grade daughter in one of New York City’s allegedly best public schools was taught about only one historical figure, Martin Luther King, Jr. The writer (Karol Markowicz) wonders about teaching King’s history without the history of our Founding Fathers, the U.S. Constitution or Abraham Lincoln. A Brooklyn teacher told the writer that teachers decline to do so because: “They don’t want to offend anyone.”

The “sour truth” also eludes the progenitors of the Central Subway Project, a subway from Fourth and Townsend to Stockton and Washington Streets, 1.7 miles. The announced taxpayer cost is \$1,600,000,000; the “sour truth” as calculated by the County Transportation Authority’s own consultant means at least \$2,100,000,000 and an August, 2019 opening, not 2018. Moreover, the same geniuses want to close Union Square to motor vehicles. Only New York City, with its Second Avenue subway 1.6 mile extension and three new stations and one renovated station at \$4,451,000,000 can now claim the most expensive train track in history. That surpasses even San Francisco’s \$1,250,000,000 per mile subway

project and there’s 31 months left to cost taxpayers more money in San Francisco.



Mom Chung, one of two massive boring machines that are digging the Central Subway.

Meanwhile, the Transbay Terminal Project, promising to move the Caltrain Station from Fourth and Townsend Streets to a new Transbay Terminal, 1.3 miles over a crowded road for about \$2,000,000,000 conceals the “sour truth” of a probable \$4,000,000,000 or more cost to taxpayers. The Transbay Terminal is in fact a real estate project for corporate builders and wealthy occupants. A train “box” was built with \$400,000,000 from 2008’s Proposition 1A, a state general obligation bond issue of \$9,950,000,000. It will never receive either high-speed trains or Caltrain commuter trains. Even promised federal funds of \$650,000,000 from Obama days won’t occur.

One last “sour truth”: from his installation as mayor in 2011 until 2016 Mayor Lee added 5,090 city employees; taxpayers now pay for 30,636 employees, a new record. Has the mayor been “deprived” of his independence, to use Walter Lippmann’s 1935 phrase?

I conclude with a sorrowful notation of the January 13, 2017 death of Professor Kevin Starr, a graduate of St. Ignatius High School, University of San Francisco, and Harvard University (a doctorate in history), City Librarian, State Librarian, University Professor at the University of Southern California and foremost historian of and in California’s history. He was beloved and respected by all who knew him and admired his extraordinary qualities of heart and mind.

Retired former Supervisor, State Senator and Judge Quentin Kopp lives in District 7



On June 7, 2016 Mayor Ed Lee toured the Transbay construction site with members of a delegation of Chinese officials and business leaders. The delegation was led by Chinese Minister of Transport Yang Qiantang. The images in this gallery show the delegation meeting with members of the construction crew and touring the Transit Center’s future rooftop park. photo: www.transbaycenter.org

West Of Twin Peaks Central Council By Mitch Bull

Mitch Bull will be back next month with the blow-by-blow from the Council.

Afford San Francisco? (Cont. from p. 1)

Proposition K would have increased the City's sales taxes from 8.75% to 9.25%, and would have generated revenue of \$150 million annually. Voters overwhelmingly voted "No" on Proposition K by 65.29% and the Proposition was roundly defeated.

A Sleight of Hand

The City creatively tried a sleight of hand: Supervisor Mark Farrell also tried to fund Proposition J, another (50%+1) budget set-aside last November tied to passage of the Mayor's General Fund sales tax which read, "Shall the City amend the Charter to create a Homeless Housing and Services Fund, which would provide services to the homeless including housing and Navigation Centers, programs to prevent homelessness and assistance in transitioning out of homelessness by allocating \$50 million per year for 24 years, adjusted annually; and create a Transportation Improvement Fund, which would be used to improve the City's transportation network by allocating \$101.6 million per year for 24 years, adjusted annually?"

Proposition J passed by 67.17% of the vote.

Please note that Farrell's Proposition J budget set-aside would have cost \$151.6 million per year, while the Mayor's and Farrell's failed Prop K sales tax increase would have generated approximately \$150 million annually.

Proposition J would have created a set-aside in the General Fund that would appropriate \$101.6 million per year for transportation and another annual set-aside of \$50 million for homelessness. Both propositions — "J" as a set-aside, and "K" as a sales tax — were for very "specific purposes" and should never have been placed on the ballot as General taxes.

Combined, they were effectively a tax dedicated to a specific purpose, but the pair of propositions were tied together in a way both could be snuck into law with a 50%+1 majority vote, instead of a two-thirds (66.6%) vote! Indeed, the Prop K sales tax increase was the second half of an end-run around the two-thirds voter requirement for taxes that go to named, specific purposes. The City knowingly violated Proposition 218 guidelines by trying to make both thresholds low enough to succeed in passing propositions J and K.

This is not the first time that Supervisor Farrell and the City have placed set-asides on the ballot that were contrary to Proposition 218 and other existing San Francisco laws.

The City's 2008 Proposition S made it a City policy that local ballot measures authorizing new set-asides or spending mandates must identify a new source of funding. It also made it City policy that the voters cannot approve a new set-aside with a cost-of-living adjustment or other annual increase of more than 2%. Additionally, according to the terms of Proposition S, any new or extended set-aside proposed in a local ballot measure must automatically expire 10 years after it goes into effect.

In the June 7, 2016 election, Farrell — a future mayoral candidate — helped pass Proposition B, a Charter amendment providing funding for parks, recreation, and open space. Proposition B — billed as a 50%+1 ballot measure — created a \$4.5 billion, 30-year set-aside that was not attached to any revenue stream. The money comes straight out of San Francisco's General Fund, another violation of the City's Prop S set-aside law.

City Controller Ben Rosenfield noted regarding Proposition B, "This proposed amendment is not in compliance with a non-binding, voter-adopted City policy regarding set-asides. The policy seeks to limit set-asides which reduce General Fund dollars that could otherwise be allocated by the Mayor and the Board of Supervisors in the annual budget process."

Further, Rosenfield stated "Should the proposed Charter amendment be approved by the voters, in my opinion, it would have a significant impact on the

cost of government."

Rosenfield also stated "The proposed amendment would create a new baseline funding requirement for parks, recreation, and open space that would grow over time. These funds are currently part of the City's General Fund discretionary revenues, available for any public purpose. As funds are shifted to meet the proposed baseline established in the amendment, other City spending would have to be reduced or new revenues identified to maintain current City service levels."

Fooling the Public?

The City continues to believe that it can financially fool the public via sleight-of-hand.

In a December 8, 2016 letter to President of the Board of Supervisors London Breed, Chair of the Budget and Finance Committee Supervisor Mark Farrell, and City Controller Ben Rosenfield, the Mayor stated, "As noted in my early termination letter for Proposition J dated November 10, 2016, I made the difficult decision to cancel the set-asides for homelessness and transportation that were included in my balanced budget on June 1, 2016. The voters did not approve Proposition K, a sales tax increase that would have paid for the increased spending, which is why this rebalancing plan is required."

The SFMTA will now only receive a \$3 million increase annually, when it had originally asked for a \$100 million annual increase.

The Mayor went on to state, "I want to thank you, Chair Farrell, for your leadership on this issue and helping establishing this new homeless department through the budget process this year."

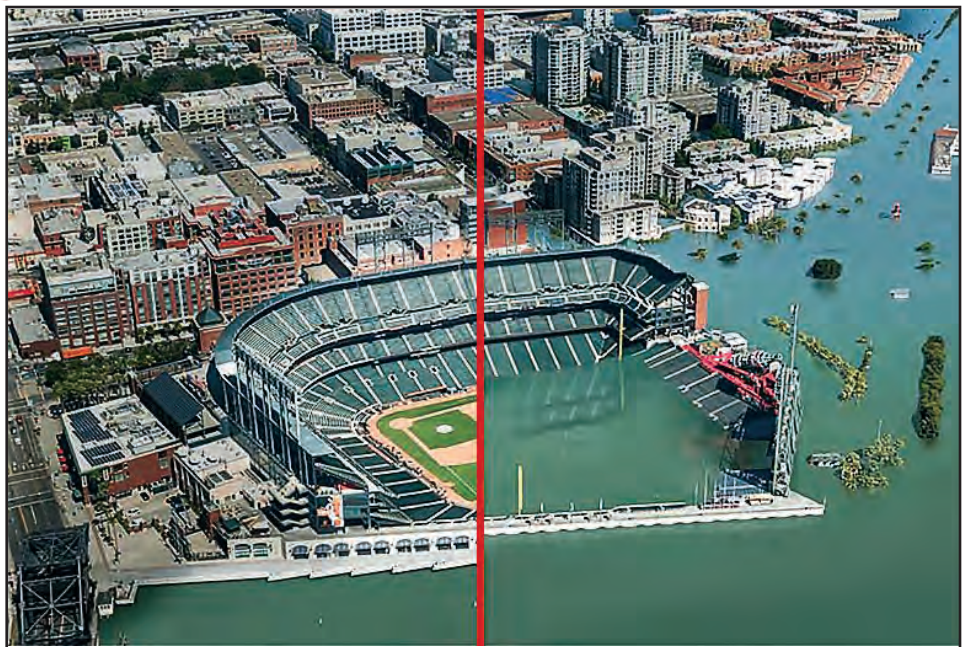
The Mayor will now be trying to decrease the City budget by 3% in FY 2017–2018 and another 3% decrease in FY 2018–2019 through June 30, 2019. He should be trying to decrease the budget by over 10% annually, but can't due to drastic over-hiring of City employees and increased City employer-share of contributions to the City employees' pension fund.

While the Mayor claims there is a looming \$431 million pension shortfall — over several upcoming decades — driven by pension increases, longer life expectancy of retired City employees, and lower-than-expected returns on pension portfolio investments that has the potential to increase City pension obligations, that's only part of the problem. He's totally ignoring the bloat in City government hiring caused during his tenure as Mayor. He needs to turn inward and examine truthfully his own culpability of year-in and year-out increases to the City's on-going payroll!

Patrick Monette-Shaw's article in this edition of the *Westside Observer* notes that of the \$665.7 million annual payroll increase to the City budget since Lee took office, fully 79% (\$525.2 million) is attributable to the *additional* 3,178 City employees who earn over \$100,000 annually Mayor Lee has added to the City budget. Their pension costs are a large part of overall increased pension-related costs, but that pales in comparison to the payroll bloat of 6,414 additional full- and part-time employees Lee has added since becoming mayor.

Donald Trump, our new President, is threatening to cut federal funding to any city having a Sanctuary City policy to not aid federal immigration agents. San Francisco receives about \$1 billion annually from the federal government. When push comes to shove, we'll see what happens to San Francisco's Sanctuary City policy, and whether the Mayor caves in to Donald Trump.

The good financial times for Mayor Lee and company may be coming to an end. As proven by Proposition K, San Francisco citizens are at a financial breaking point, and no longer want to fund a bloated, ineffective government. As Monette-Shaw notes, it is long past time Mayor Lee's hiring binge be fully audited.



After Sea Levels Rise

Sea-level rise is coming. Even if we keep global temperatures from rising more than 2 degrees Celsius above historic norms—the benchmark for avoiding catastrophic climate warming—we may still see oceans creep four feet farther inland by 2100 and rise 20 feet by as soon as 2200. That's according to a new study published in the July issue of *Science*.

More: takepart.com/article/2015/07/15/what-sea-level-rise-looks-america-coast

The cost of San Francisco's infrastructure is causing people to leave the City because we are no longer receiving value for the high taxes that we pay.

San Francisco has to start working on reasonable budgets with ballot propositions that follow the letter of the law.

As Mayor Lee says, "It is important to underscore that we are not in the midst of a recession. We are not cutting services or laying employees off. We do, however, need to make responsible decisions and remain disciplined with our City's budget as we prepare for the expected yet uncertain changes at the federal level with new administration in Washington D.C."

San Francisco will have a \$100 million budget deficit beginning in FY 2017–2018 set to begin July 1, 2017 and an additional \$286 million budget deficit in FY 2018–2019 beginning July 1, 2018 — for a total of nearly \$400 million. In the midst of plenty, these budget deficits are

ridiculous.

The Mayor ended his Rebalancing Plan memo by saying, "Thank you to all the members of the Board of Supervisors, community groups, and departments that I heard from during this rebalancing process. Your input has been critical, and I am proud of the balanced and thoughtful approach we have taken that embraces true San Francisco values. We are always stronger when we stand as one, and I look forward to working with the current and new members of the Board of Supervisors in the coming months."

None are so blind as those who will not see. Is our Mayor the blindest of them all?

Will you be the next one forced to move out of San Francisco?

George Wooding Coalition for San Francisco Neighborhoods; contact: wooding@westsideobserver.com

Laguna Honda (Cont. from p. 1)

professional integrity and respect for the communities served.

At the same meeting, LHH quietly reversed a bizarre feature of its Admissions Policy. After 12 years, the hospital Medical Director has been restored as "the ultimate authority over admissions." Sane as this sounds, such authority could be uneasy for recently-appointed Medical Director Dr. Michael McShane.

During the notorious Flow Project of 2004, a reckless political decision was made regarding patient admissions. Former LHH Medical Director Dr. Terry Hill was fired for prioritizing patient safety over speeding the flow of younger, sometimes violent, non-paying patients from SFGH. Then, a long-standing medical responsibility was usurped at the unqualified hands of newly-imposed CEO John Kanaley — a

marine engineer turned administrator. In 2009, former dialysis nurse turned administrator Mivic Hirose succeeded him, retaining final say over admissions. Apart from the potential harms and liabilities involved, that Admissions Policy degraded professional relations and the reputation of a hospital that aspires to be more than a Nursing Home.

Perhaps these steps toward honesty and sanity were spurred by external pressures from regulators or attorneys. Nevertheless, they are encouraging signs for the New Year.

1. www.cdph.ca.gov/Pages/NR17-005.aspx

Dr. Maria Rivero and Dr. Derek Kerr were senior physicians at Laguna Honda Hospital where they repeatedly exposed wrongdoing by the Department of Public Health. Contact: watchdogs@westsideobserver.com

Polystyrene (Cont. from p. 2)

commonly found plastic items on beaches and inland creeks, making it more challenging to recover.

Animal life is jeopardized when polystyrene is ingested. In addition to sickness and death, birds, turtles and fish expel an increased toxicity in the food chain. Smaller pieces are often mistaken for fish eggs by seabirds and other marine life.

Unlike harder plastics, polystyrene contains a chemical used in the production process called "styrene" which will metabolize if ingested. The food chains contamination trickles to humans who consume contaminated marine wildlife.

San Francisco is reducing its carbon footprint with progresses in recycling and composting awareness. However, while landfill disposal is at the lowest level on record, and has been reduced by half over

the last decade, San Francisco still sends 444,000 tons of material to the landfill each year.

Polystyrene foam packaging and food service ware cannot be recycled through San Francisco's blue bin recycling collection program because of its ability to break into small pieces too difficult to handle. Polystyrene foam is not compostable and is otherwise uneconomical or impossible to recycle, especially if food-soiled.

Considering it is made of 95 percent air, only an estimated one percent of all polystyrene foam is recycled in California because of food contamination and the material's bulky, easily airborne characteristics. Recycled polystyrene has very little market value and can only be used to make a small range of products, most of which cannot be recycled themselves.

Cont. p. 6

Commentary

Water here, water there; water scare

By Steve Lawrence



While storms fill reservoirs and residents celebrate the obvious end of drought, ominous forces threaten San Francisco's water supply: The State is demanding more Tuolumne River water for fish and habitat.

“Eighty-five percent of the water from your tap comes from the Tuolumne River ... If the system's ability to take river water is cut drastically, as has been proposed, San Francisco and its service area are in big trouble.”

If the State's proposed rule goes into effect, the voluntary rationing we've seen during the past few years of drought will need to be supplanted with much worse. Mandatory 50% rationing would be required, according to SFPUC, if demand returns to pre-drought levels. Even if demand were to stay as low as it has been with voluntary rationing, a further 20-30% cut in water usage would be needed. Required cuts would be devastating.

SFPUC hopes to settle. Absent settlement, the future adequacy of our water supply is so bleak and dire that all hope seems pinned on settlement. Even with settlement, it will be “painful and costly,” officials say.

How does this come about? For many years the San Joaquin River and Delta, and fish and habitat there, have suffered and declined. During very dry periods only very small numbers manage to reproduce. About two-thirds of the river water (the Tuolumne is tributary to the San Joaquin) is diverted for human uses. Federal agencies believe that no more than two-fifths should be diverted for a healthy river. It will take decades to repair the damage. The State has come out with a Bay Delta Plan under which 40% (30-50%) of river flow during February-June would flow unimpeded. In essence, our water system will get much less water than we have been getting.

Eighty-five percent of the water from your tap comes from the Tuolumne River. While there are other sources, local runoff and groundwater as examples, these pale compared to water from the river. If the system's ability to take river water is cut drastically, as has been proposed, San Francisco and its service area are in big trouble.

SF is nearly finished with an historic \$4.8 billion upgrade of our water system. A \$7 billion upgrading of the sewer system has begun. Rates have been rising rapidly, doubling every few years. Rates are certain to rise steeply for many years more. According to SFPUC, the median household pays about \$1100 per year now for water and sewer.

If San Francisco settles with the State,

as it hopes to, more storage capacity will be required. Water is stored in reservoirs, and also in underground aquifers. Increasing storage will be expensive. It is neither easy nor cheap to permit and construct new reservoirs. Dams have been verboten for decades, with almost none built. Yet there will be no choice. SF residents already use a remarkably low 41 gallons per person a day. While this number has dropped by 20 gallons over the past dozen or so years, it is just not realistic to expect it to drop much further. Water saving devices have been installed, and drought remedies taken.

San Francisco has junior rights to river water. Unless and until flows exceed a level, the irrigation districts, which own senior rights, get all the water. SF needs to capture and store water when flows are heavy. That has always been so, but with the State's Bay Delta Plan it will be more so. We will somehow need to acquire more storage at whatever it may cost. Also, we will undoubtedly promise to spend very liberally to repair and monitor the riparian system that nourishes the river and threatens fish. There really is no alternative.

All this comes at a difficult time. Global warming is likely to reduce the snowpack. Snowpack has been “storage” for our water system. Snows melt over time and water flows as it is used. Storms of this season had snow levels of 8500 feet, much higher than those of the 20th Century. More storage was probably a good idea even before the Bay Delta Plan threatened. But plans to build more were axed a dozen years ago, and now the water system faces double trouble.

At a Commission meeting in early January, dozens of concerned citizens spoke to the Commission, many favoring the fish and higher river flows. (Environmental groups mobilize the troops, and lobby effectively.)

No one can say how this will resolve, but expect the Bay Delta Plan and its effect on our Hetch Hetchy water system to be quite significant.

Steve Lawrence is a Westside resident and SF Public Utility Commission stalwart. Feedback: lawrence@westsideobserver.com

Letters



Please be advised that you have the wrong date on your Gold Mine Hill photo (westsideobserver.com/remember.html) You have it, “View from Twin Peaks. Date 1924 Mar. 26” when, in fact, the date was most likely 1953 due to the fact that the homes at the time on Midcrest Way were not built until around 1953. Also, those homes pictured in the distance on Glenview Drive and Dawnview Way were built in 1951. (I know because we moved into our new home on Dawnview Way in 1951 right after it was built.)

Marc Paulsen, La Honda, California

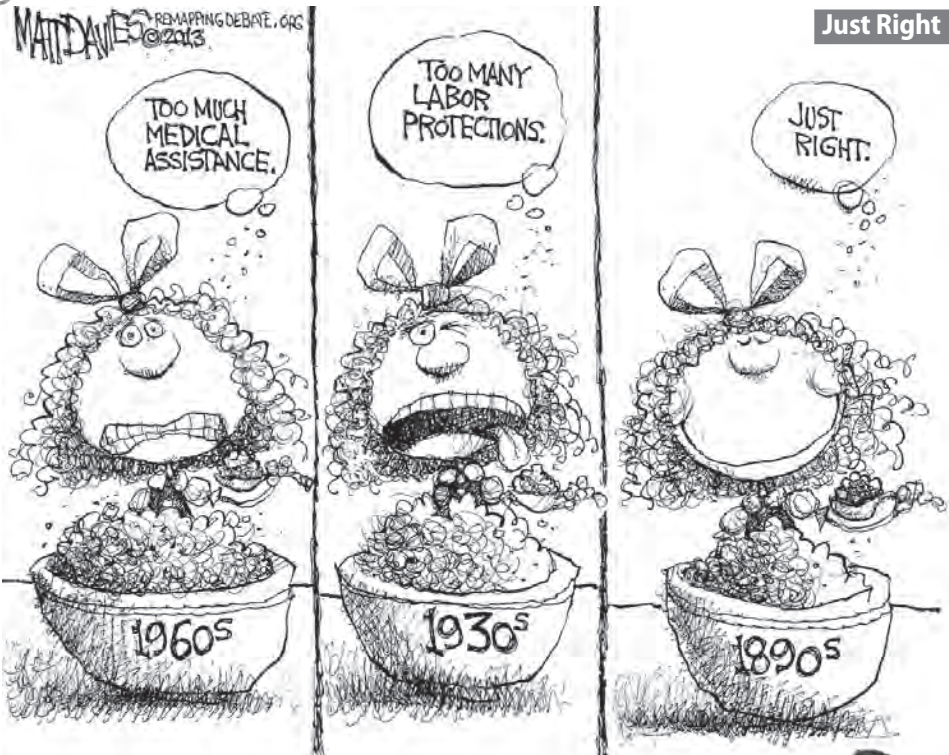
Editor's Note: Thank you Marc, I have corrected the website.

Re: Environmental Review: Reversing Mount Davidson's Long Decline

I'm appalled that you describe the author of this article as “an unabashed tree-hugger”. Mr. Sigg — a person with agenda — is a tireless advocate for destruction of 18,500 trees and unceasing use of most toxic herbicides. It is an insult to people who care about trees. The description isn't accurate: a fact not difficult to check.

The picture of goats removing weeds in environmentally friendly way attached to the article is also puzzling. No goats are used on Mt. Davidson. A LOT of herbicides are

Cont. p. 6



My 2¢ • Will Durst © 2016



THE FIRST 100 DAYS.

As extraordinary as it sounds, Donald J. Trump is now the 45th President of the United States. Which is mind- boggling. Like making John Goodman the cover model for this year's Sports Illustrated Swim-suit Issue. Kim Kardashian- appointed chief scientist at the Atomic Energy Lab. Colin Kaepernick in charge of WikiLeaks.

“It's Mourning in America.” Trump will be a president for all Americans except the Muslims, Mexicans, losers, whiners, idiots and nasty women, especially the fat disgusting ones.”

The liberals' last best hopes were dashed on Inauguration Day when the Mango Mussolini put his hand on the Bible and didn't burst into flames. The preacher said the rain that started to fall as DJT took the oath was a good omen in the Bible. Yeah, tell that to Noah.

The speech was darker than the Cleveland Browns' offseason. Kind of a cross between Nixon and Voldermort. “It's Mourning in America.” Trump will be a president for all Americans except the Muslims, Mexicans, losers, whiners, idiots and nasty women, especially the fat disgusting ones.

But now our attention turns not to the real estate developer's vitriolic tweets but his diabolic feats. What is the agenda of the Tweeter of the Free World? Here's what might go down over the rest of the first 100 days of the Donald Trump Experience.

January 31. Day 11. Trump trademarks “White House” and banks a royalty every time the press shows or mentions it.

February 12. Day 23. Congress repeals Obama Care and replaces it with Trump Care, which covers nobody but is advertised as “much more incredibly tremendous.”

February 21. Day 32. An Executive Order makes it illegal to use the words “climate” and “change” in the same sentence.

March 7. Day 46. The President tweets a major nuclear reduction pact with Russia.

March 8. Day 47. The President tweets a major boost in our nuclear arsenal to intimidate Russia.

March 9. Day 48. The President tweets a major merger with Russia. The two countries will now be known as the USSR East & West.

March 12. Day 51. The White House™ press is moved to the basement of a bar in

Bethesda, Maryland.

March 18. Day 57. Eric and Donald Jr. are apprehended shooting pandas at the National Zoo with RPGs. March 24. Day 63. California Governor Jerry Brown authorizes barricades at all state entrances and begins to charge a \$15 cover and a two-drink minimum to enter “Golden Land.”

March 29. Day 68. After Ruth Bader Ginsburg and Sonia Sotomayor are arrested, Trump fills 3 vacancies and the Supreme Court rules abortions illegal and determines voting to be restricted to white male landowners.

April 1. Day 71. The President authorizes a nuclear strike against Ottawa but Secretary of Defense Mad Dog Mattis pulls the plug after figuring out it's an April Fool's joke.

April 3. Day 73. President Trump tries to throw out the first ball at a windy Washington Senators season home opener but the ball and his hand get stuck in his hair due to an excess of product.

April 26. Day 96. The Pharmaceutical Industry reports record first quarter profits.

April 29. Day 99. Trump holds a contest among his Cabinet members to see who can sell the most Subway sandwiches in three hours on the National Mall.

April 30. Day 100. Trump tweets that he is bored and wants to quit. The nation is stunned.

May 1. Day 1. Mike Pence succeeds Donald Trump as the 46th President of the United States. The nation recoils.

Copyright © 2017, Will Durst. Will Durst is an award- winning, nationally acclaimed columnist, comedian and former door-- to-door miracle soap salesman in Milwaukee Wisconsin. For a calendar of personal appearances, please visit willdurst.com.

WESTSIDE OBSERVER

www.westsideobserver.com

Award Winning News for the Neighborhood
— Society of Professional Journalists



PO Box 27176, SF 94127 • 415 517-6331

Publisher: Mitch Bull

mitch@westsideobserver.com

Editor: Doug Comstock

editor@westsideobserver.com

Ad Sales • Mitch Bull

Contributors: Lou Barberini, Brian Browne, Mitch Bull, Julie Casson, Doug Comstock, Matt Davies, Will Durst, John Farrell, Sharon Franzen, Flora Lynn Isaacson, Jack Kaye, Dr. Derek Kerr, Carol Kocivar, Quentin Kopp, Steve Lawrence, Anise J. Matteson, Brandon Miller, Patrick Monette-Shaw, Sergio Nibbi, Dr. Maria Rivero, Glenn Rogers, Tony Taylor, George Wooding
Photos: Mitch Bull

The ideas and opinions expressed in these pages are strictly those of the author and do not necessarily reflect the opinions of the staff or publisher of this paper. The Westside Observer is a free monthly newspaper serving the entire West of Twin Peaks area of San Francisco. Circulation is 18,000 copies, distributed 10 times a year. 16,000 are distributed -to-door, 2000 are distributed via free distribution racks in the West of Twin Peaks area, as well as libraries and other key drop-off points (see westsideobserver.com/hardcopy.html).

By the Numbers

The Unaudited, Unverified, Undocumented City Pension

By Lou Barberini

Happy New Year!



Over the past several months, I authored several articles for this newspaper on the peculiarities of how the San Francisco employees' \$2.8 billion Deferred Compensation plan (Deferred Comp plan) is administered. The Deferred Comp plan allows employees to save additional funds for retirement to supplement their City pensions. The employees have worked hard to save money for their families and retirements, and they deserve to be ensured their savings are secure and present when they need them!

By extension, I have contended in these articles that if the San Francisco Employee Retirement System (SFERS) neglected to apply fiduciary care to the Deferred Comp plan, it may be reasonable to extrapolate that fiduciary care may also probably be lacking on the management of the larger \$20 billion public pension fund, the pension for which taxpayers are ultimately on the hook.

On November 21, 2016, another CPA and I met with SFERS Executive Director Jay Huish and posed four questions:

Question #1: Has SFERS hired an independent CPA firm to audit and authenticate the existence of the assets in the SF employees' \$2.8 billion Deferred Comp plan. Because Prudential Insurance commingles numerous cities' investments

is this not in fact an annuity? Recall an elected Retirement Board Commissioner claimed annuities are "inferior investments." Mr. Huish said he would get back to me.

Two months have passed since our meeting. I have twice emailed Mr. Huish requesting answers to our questions, yet Mr. Huish still has not answered questions 2, 3, and 4 above. Mr. Huish's silence is deafening and speaks volumes about the integrity of both the Deferred Comp plan and the separate and larger SFERS pension fund. The fact that he cannot answer question #2: where does SFERS get the data that supports SFERS' annual report, is a gigantic, cautionary red flag!

On another deferred comp matter, six months have passed since I asked Pruden-

Two months have passed since our meeting. I have twice emailed Mr. Huish requesting answers to our questions, yet Mr. Huish still has not answered questions 2, 3, and 4..."

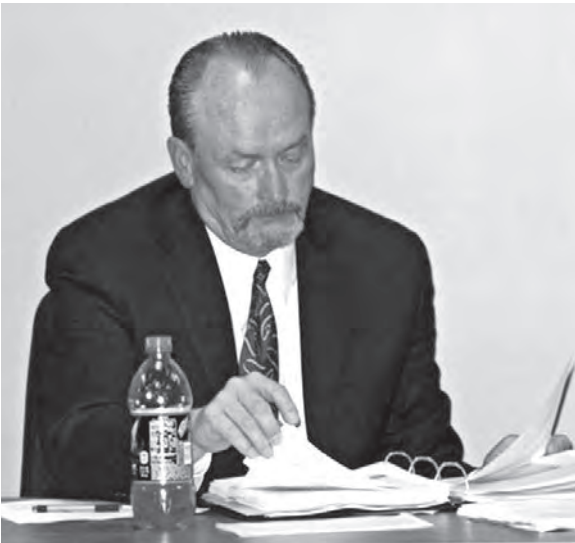
into one unsegregated account, the *actual existence* of San Francisco employees' investments is in question. The Prudential Insurance contract with San Francisco gives great flexibility for Prudential to maintain records of how employees' investments would have performed, without actually investing the money. Mr. Huish confirmed my worst fears: While SFERS includes Deferred Comp values in their annual report, they do so without an independent CPA firm and without verifying that all of San Francisco's employees' investments actually exist at Prudential Insurance.

Question #2: When SFERS prepares its annual report, were independent documents provided to confirm the values of public employees' Deferred Comp assets or is SFERS just accepting Prudential Insurance's word. Mr. Huish said that every five years, when public employees' assets are transferred (called: "churning") to a new insurance company, the assets have correlated to what the insurance company had been reporting. That was sufficient assurance for Mr. Huish. I reminded Mr. Huish that during the SFERS 2009 insurance company switch, a significant \$100 million deficit in assets surfaced. Those assets had vaporized without a trace. Mr. Huish said he would get back to me with the documents on which SFERS based its annual report.

Question #3: Why does Prudential keeps two sets of books by creating a secondary unit price for each public employee's investment that is different from the underlying fund share price the employee believes he is investing in. Mr. Huish said he would get back to me.

Question #4: If Prudential Insurance's product is manufactured out of Prudential's "insurance and annuity" division

tial representatives about the government-issued "license plate" (CUSIP) number of the deferred comp components, and I have received the same answer that Mr. Huish gives me: *silence*. However, in November, Prudential Insurance registered that they paid \$20,000 to have two San Francisco lobbyists represent them. Why does the incumbent Deferred Comp Plan manager need a lobbyist to hold on to this



Executive Director, Jay Huish, SF Employee Retirement System

City contract?

This article is not intended to serve as financial advice, but to point out where investments may be negatively affected when due diligence and fiduciary care apparently have not been applied. Based upon the opaqueness of records, silence from the fiduciaries, and even the question of the existence of the entirety of the Deferred Comp plan's assets, it would be advisable for all San Francisco Deferred Comp investors to consult with their independent advisors or CPAs on how to proceed with their Deferred Comp investments.

Make sure to have your consultant factor in Mr. Huish's employment record at UC Berkeley's pension system. As the December 12, 1995 *San Francisco Chronicle* reported, Mr. Huish "compromised UC procedures," had a "disregard for apparent conflicts of interest," and hired a friend's friend who had just been released from prison for defrauding the government. That Huish-hired employee then allegedly defrauded the UC Berkeley's pension. UC Berkeley put Mr. Huish on leave and he was hired by SFERS.¹

Lou Barberini, CPA, lives and works on the Westside. Lou.barberini@gmail.com

1. www.sfgate.com/news/article/In-Probe-UC-Learns-Contractor-Was-Convicted-of-3018626.php



Letters (Cont. from p. 5)

used on Mt. Davidson.

The last application was on November 2nd. The signs announced Imazapyr used on blackberries. A RPD employee (Christopher Campbell) told me they are targeting blackberries and cotoneaster. I saw another employee in hazmat suit cutting down a pretty tall eucalyptus (resprouted from a stump of a tree destroyed earlier) and applying a herbicide to the stump.

I'm attaching these pictures (taken during my Mt. Davidson walk on that day) - which are much more appropriate

Homelessness is a serious problem in San Francisco. We as fortunate homeowners in Forest Hills Extension welcome low income seniors to our neighborhood and commend Christian Catholic Homes and the City of San Francisco for their efforts to build apartments at 250 Laguna Honda Blvd.

We find the extreme language and conspiratorial NIMBY perspective in John Farrell's article disturbing and a reflection

Thank you for your letter. I agree with you that homelessness is a serious issue in San Francisco and we are fortunate; however as my article mentioned, the issue is NOT against low income housing in our neighborhood. The article was based on facts that there are major concerns regarding the proposed 150 unit senior housing project at 250 Laguna Honda Blvd. These concerns included the oversize of the project, the integrity of the hill that would be excavated and has had landslides in the past, the closing of a church and preschool that provides important services to the community — especially children — in the surrounding neighborhoods, and the lack of transparency of the developer with



to accompany Mr. Sigg's article.

I hope you would do the necessary corrections and would never again call the tree-killing advocate a tree-hugger.

Anastasia Glikshtern

on him and not of our neighborhood. We hope that the Observer starts to seek out and publish more factual and less sensational material.

We look forward to seeing all perspectives from our community posted on the Westside observer website.

Daniel Coleman & Eileen Kahaner

Forrest Hills Extension

Editor's Note: John responds below:

the neighborhood about the nature and scope of its plans. I am a concerned Forest Hill neighbor and believe I speak on behalf of the majority of Forest Hill neighbors, whose association unanimously approved a resolution written by the neighbors to reject the project as proposed, since the development is too large. I have attended all of the neighborhood meetings regarding the project and meet with Forest Hill neighbors on a weekly-basis who are concerned with the size and scope of the project as proposed and look forward to working with the developer to address these issues. Please do not hesitate to contact me to further discuss.

Sincerely, John Farrell



NO MORE POLYSTYRENE

EFFECTIVE JANUARY 1, 2017



City law prohibits all stores from selling products made with **polystyrene foam** material.



SfEnvironment.org/no-foam or call (415) 295-6266 for details.

Polystyrene (Cont. from p. 4)

Since 2006, San Francisco has reduced trash to landfill by half and the City has earned positive attention on the national stage for its innovative and ambitious waste initiatives.

Zero waste means sending zero discards to the landfill or high-temperature destruction. Instead, products are designed and used according to the principle of highest and best use.

The Zero Waste International Alliance defines zero waste as valuing all discarded materials as resources that should not be burned or buried. The goal is zero air, water and land emissions.

To achieve 100 percent zero waste, San Francisco Department of Environment will continue to advocate for state

legislation and partner with producers to develop a producer responsibility system. The mission is for producers to design better products and take responsibility for the entire lifecycle of a product, including take-back and recycling.

The City and County of San Francisco believes achieving zero waste is possible. SF Department of Environment will continue to promote best practices, including waste prevention, recycling and composting.

"Innovative policies, financial incentives, as well as outreach and education are all effective tools in our toolbox that have helped San Francisco," said San Francisco Department of Environment Director Melanie Nutter.

Tony Taylor is a local reporter.

New Laws for 2017 – How Aware are You?



With the New Year celebrations, the swearing-in of a new administration in Washington, and new local politicians, taking office, you, may have missed the advisement of all of the new laws that took effect on January 1.



What you may not know is how busy the California legislature was in 2016, and some of the new laws and statutes. The members of the State Assembly and State Senate sent a whopping 1059 pieces of legislation to Governor Jerry Brown's desk for signature in 2016. Of those, the Governor signed 898 bills into law, vetoed 159, and let two become law without his signature. While many of the laws are fairly esoteric or a small tweak to an existing measure, there are several that could have a big impact if you run "afoul" of them.

First and foremost is the new law regarding cellphone use while driving in a vehicle. While it has been against the law for several years to talk without using a hands-free device in your car, the new law (aimed at those who text) takes it one step farther: Californians are no longer allowed to use a handheld wireless tele-



phone or wireless electronic device while driving, unless the device is mounted on the vehicle dashboard or windshield in a way that doesn't inhibit the driver's view of the road. Drivers are only allowed to activate or deactivate a feature or function on the device with a single swipe or tap and cannot do that while holding the device.

Senate Bill 491 also affect drivers as it prohibits them from wearing headsets, ear-plugs or ear buds in or over both ears while operating a vehicle or bicycle.



Another new law affecting you and your car is SB 838, which increases the vehicle registration fee from \$43 to \$53 beginning

on April 1.

AB53, passed in 2015 but just now going into effect, requires that all children under the age of 2 be fastened into rear-facing child safety seats. There is an exception for children who weigh at least 40 pounds or are at least 40 inches tall. Children under the age of 8 are required to ride in the back seat.



SB3 raised the California minimum wage from \$10 per hour to \$10.50 per hour for all businesses that have over 26 employees. Of course it is already higher in San Francisco.

Per SB 819, alcohol in a powdered form



(yes it does exist) is now illegal to possess, sell, manufacture or use. It includes powdered alcohol that can be combined with water or other liquids to be reconstituted, but does not cover "vaporized" alcohol. Speaking of alcohol, beginning on January 1, it is now legal for beauty salons and barbershops to serve free wine and beer to their clients until 10 PM.

Voter registration and mail-in balloting: AB1436, passed in 2012 but just



now taking effect, allows people to register to vote on Election Day, with county election HQ serving as election hubs starting

Cont. p. 8

5,090 and Counting: Bloat Under Ed Lee

Who's Auditing Mayor's Hiring Binge?

By Patrick Monette-Shaw



I won't keep you in suspense. The answer to the rhetorical question in the title of this article is — wait for it — *nobody!* Theoretically, the legislative branch of City Hall — the Board of Supervisors — should have been providing some sort of checks and balances to the Mayor's hiring binge. That didn't happen.

In August 2016, *San Francisco Chronicle* reporter Heather Knight reported that Supervisor Scott Wiener, when asked about the size of City government and salaries paid to City employees, answered: "... he wouldn't defend every single hire made in the last five years and that he knows 30,626 workers [Full-Time equivalents] sounds like an awful lot."

If the Legislative Branch won't defend every single hire Mayor Lee has made during his tenure, it's reasonable to conclude the full Board of Supervisors has provided no checks or balances to the patronage hiring binge occurring under taxpayers' noses.

Mayor's Bloat of City Employees

On August 29, 2016 the City Controller provided historical data showing the number of FTE's added across various fiscal year City budgets. (FTE's are "full-time equivalent employees" calculated by combining multiple part-time employees into an equivalent 1.0 full-time employee.) The data is sobering, since it indicates the number of FTE's may have soared somewhere between 18.4% and 30.2% during Mayor Lee's watch.

As Ms. Knight reported, the City had 30,626 FTE's budgeted at the start of FY 2016–2017 on July 1, 2016. If preliminary data from the Controller's Office provided on January 12, 2017 holds true, by the

on September 5, 2016 that examined the City's FY 2015–2016 budget ending June 30, 2016. The follow-up article illustrates that in the then-five-and-a-half years since Lee took office in the middle of FY 2010–2011, he added a total of 4,794 FTE's, which translates into having added a total of 6,414 full- and part-time City employees to the City payroll during his tenure.

Starting July 1, 2016, the City reportedly had fully 30,626 FTE's, or fully 40,397 full- and part-time employees, on the City's payroll. But it is thought the number of FTE's may have skyrocketed between July 1 and December 31, 2016.

One unanswered question is why San Francisco needed to add 655 more employees earning over \$200,000 annually, each, at an increased cost of \$147.8 million during Ed Lee's tenure. The \$147.8 million increase for the additional employees earning over \$200,000 was fully 22.2% of the \$665.7 million in payroll growth!

Why did the City need 922 employees earning over \$200,000 each, at a total cost of \$208.1 million? For that matter, of the 6,414 additional full- and part-time employees Lee added since taking office 3,178 (49.5%) earn over \$100,000 annually and account for 79% (\$525.2) million of the \$665.7 million annual payroll increase. The remaining 51.5% (3,236) split the \$139.5 million payroll increase. Those employees earning over \$100,000

...of the 6,414 additional full- and part-time employees Lee added since taking office 3,178 (49.5%) earn over \$100,000 annually and account for 79% (\$525.2) million of the \$665.7 million annual payroll increase. ... Those employees earning over \$100,000 are going to drive up costs to the City's pension system for decades to come!"

end of Calendar Year 2016 on December 31, 2016 the number of FTE's may have jumped by 3,379, to 34,005. If that pans out, the Mayor appears to have possibly added 7,897 FTE's during his now six-year tenure as mayor, a 30.2% net increase in total FTE's since taking office.

Back in March 2016, I wrote an article on Mayor Ed Lee's hiring binge vs. City retiree pensions ("Mayor's Hiring Binge vs. Retiree Pensions," available on my web site. That first article examined the City's budget that ended June 30, 2015.

That article noted the City Controller's Office had admitted that as of December 2015, of \$42 million in increased City employer share of pension contributions projected for FY 2016–2017 that started on July 1, 2016, fully \$14 million of the \$42 million — 33.3% — was attributable to increased pension costs as a direct result of adding additional new City employees.

I wrote a follow-up article ("Mayor Lee's Five-and-a-Half Year Hiring Binge")

are going to drive up costs to the City's pension system for decades to come!

San Franciscans deserve a top-to-bottom audit of the 6,414 additional full- and part-time employees Mayor Lee has added to the payroll during his hiring spree to determine how many more full- and part-time employees he added between July 1, 2016 and today's date.

My September 5, 2016 update to the Mayor's hiring binge introduced you to your new highest-paid City employee. That's the Chief Investment Officer at the San Francisco Employees' Retirement System (SFERS), William J. Coaker, Jr., who earned a whopping \$512,485 in base pay for the period ending June 30, 2016. He may have received a raise since July 1, 2016 and may be in for another raise in July.

The Bouncing "FTE" Ball

Following the FTE bouncing ball of the number of FTE's is more difficult than it appears.

Cont. p. 14



While there is an acute shortage of nursing staff caring for patients, the Mayor's hiring binge focused on increasing highly-paid managers, not nursing line staff. Above, SF General Hospital Nurses assembled inside City Hall after being locked out of the mayor's office. The "empty scrubs" represent the nursing jobs that need to be filled at their hospital. The missing staff means danger for patients, according to health care advocates.. Photo: SEIU 1021

Money Matters By Brandon Miller

8 Tips to Improve Your Financial Communication



What makes a couple successful in their financial relationship? Ameriprise Financial surveyed over 1,500 couples (those married or living together for at least six months) to learn about their money conversations and how they make decisions. The results revealed eight ways you can improve the financial health of your relationship:

Understand your partner’s money mindset. It’s normal to have differing views and habits about money, but that doesn’t mean you can’t agree on your financial goals. Couples who report being on the same page financially work to understand their partner’s approach to money and keep the lines of communication open.

Make finances a priority and don’t give up. Couples who are willing to have the hard conversations and who work together to find financial harmony will reap the benefits over time. As you might expect, the study found that couples who had been together longer tend to have better communication and are on the same page when it comes to financial matters.

Agree on financial goals. It’s tough to pool your money with someone who overspends or who isn’t willing to save for the vacation you’ve always dreamed about. Sharing financial goals does bring you closer together—or at least it’s one less thing to argue about. To make it easier to save, challenge yourselves to add a timeframe to each goal so you know what you’re working toward first.

Assign and accept financial roles and responsibilities. Most couples split up tasks such as paying bills or monitoring investments. Clear responsibilities allow you to hold one another accountable without worrying if the cable bill was paid. However, be sure to work together on tasks such as retirement planning that requires close collaboration.

Invest in your future together. Make it a priority to set aside a portion of your earnings for short- and long-term goals, including retirement. Know how much you collectively have in retirement savings—a surprising 23 percent of couples are unsure of this number. If you have kids, talk about how much you’d like to contribute to their college expenses so you can save accordingly.

Set a spending limit. Spending habits were the leading cause of contention for couples. Consider setting a spending limit to ensure you’re on the same page as your partner regarding large expenditures. On average, couples said a purchase over \$400 should trigger a discussion.

Understand that disagreeing is okay. According to the Ameriprise study, even couples who say they’re in financial harmony disagree on financial matters. What’s important isn’t that the partners don’t always agree, but that 82 percent resolve their issues and move on.

Enlist a professional to solidify your financial plan. When you need an objective opinion – or a deciding vote – meet with a financial advisor. Together the three of you can create a financial plan that meets your specific needs as a couple.

Ultimately, it feels good when you are in sync with your partner regarding financial decisions and can work together toward managing your finances. Couples who actively work on improving their financial relationship will likely be less frustrated over money matters and may even feel better about their relationship overall.

Brandon Miller, CFP is a financial consultant at Brio Financial Group, A Private Wealth Advisory Practice of Ameriprise Financial Inc. in San Francisco, specializing in helping LGBT individuals and families plan and achieve their financial goals

The Ameriprise study on couples and money was created by Ameriprise Financial, Inc. and conducted online June 14-July 14, 2016 by Artemis Strategy Group among 1,514 U.S. opposite and same sex couples (married or living together for at least six months with shared financial responsibility) between the ages of 25-70 with at least \$25,000 in investable assets.

New Laws (Cont. from p. 7)

two weeks prior to Election Day. It allows for “conditional voter registration” which means the ballots aren’t counted until officials verify that the voter is eligible and hasn’t cast a ballot elsewhere. Current law cuts off voter registration 15 days prior to an election. SB450 also make casting a ballot much easier, as voters can now return mail-in ballots to any county elections office in the state, not just in the county that issued the ballot.



AB 1386 allows businesses to stock “EpiPens” in case there is a need to treat people suffering from life-threatening allergic reactions. The law allows pharmacies to give the devices to college, private businesses and other venues that have a plan in place for using them.

AB1732 requires that all single-user toilet facilities in any business or public place to be “all-gender” facilities.



Homeless students at Community Colleges: Under AB 1995, all community college campuses with



shower facilities on campus must allow homeless students who are enrolled, paid, and in good standing to use the facilities. Another law, AB 1747, requires public and private institutions that offer food services to apply for a state-funded program that provides food for homeless students.



Assault Weapon law: Voters passed a law that will require all Californians who own gun magazines with more than 10 rounds to give them up, starting July 1. Buyers must undergo a background check before buying ammunition and will be barred from buying new weapons that have a “bullet button,” which were developed by manufacturers to circumvent the state’s assault weapons ban. A bullet button allows a gun user to quickly dislodge the gun magazine using the tip of a bullet.

AB 30 bans the use of the name “Redskins” from all California public school

Can you keep your lifestyle in retirement?

Let’s talk.

415.623.2450

Brio Financial Group
A private wealth advisory practice of
Ameriprise Financial Services, Inc.
44 Montgomery Street, Suite 4210
San Francisco, CA 94104-4815
415.623.2450 BrioFG.com



Ameriprise Financial Services, Inc., Member FINRA and SIPC.
© 2015 Ameriprise Financial, Inc. All rights reserved. 1098734ACMR0115



Specialists in Residential Urban Landscaping

Janet Moyer Landscaping specializes in the creation of custom residential landscapes that address the unique challenges posed by San Francisco’s climate, terrain and architectural constraints.

Irrigation Association Certification
Certified Irrigator, Contractor, Certified
Irrigation Designer, Certified Landscape
Irrigation Auditor

Award winning design
“Outstanding Achievement Award”
California Landscape Contractors
Association, 2007 - 2009, 2012 & 2013

415-821-3760 · 1031 Valencia St., San Francisco · jmoyerlandscaping.com
Landscape Contractor License 853919 · Pest Control License 36389



sports teams.



Sexual assault clarification: A person who sexually assaults an unconscious or severely intoxicated person will become a crime that is ineligible for probation, under SB 2888.

Right-to-die legislation: Terminally ill patients in California will now be allowed to use experimental drugs, which do not have full regulatory approval, to decide when they want to end their lives. It authorizes, but does not require health plans to cover investigational drugs and protects physicians from disciplinary actions if they recommend them once other treatment options have been exhausted.



These are just a few of the 898 laws that were passed. To see more of the new legislation go onto the website of the State of California.



TARAVAL STATION Crime Report

— Taraval Station Community Meeting —

Feb 21 | 7 pm – 9 pm • Taraval Station, 2345 24th Ave • taraval.org



As 2016 came to a close, we saw a significant decrease in burglaries and auto burglaries. With crime trends on the decrease, it is important to know that our success comes from the partnerships we have made with the community and city agencies. Our officers are diligent in their efforts of higher visibility throughout the district. Our Taraval investigators are relentless in their pursuit of identifying suspects and solving cases while many of our community members also play a strong and active role in the safety of their neighborhoods. I must also thank the members of SFSafe who are an intricate component to the safety of our neighborhoods. I am confident that our efforts through our partnerships will continue to produce positive results in the future.

In January, the residents of the OMI were faced with the impact of an Officer Involved Shooting incident and a homicide. We understand the stress this places on the residents and know they rely on us to work closely with them to maintain a sense of safety in their neighborhoods. Our commitment to community policing through trust building is strong. I have noticed a decreased in the attendance at our community meetings and understand that life, especially during the holidays, can become extremely busy. Please know that your perspective and thoughts on issues and events are needed, valued and have been greatly appreciated. I would like to invite all of you to set aside one hour a month to participate in a community meeting in your neighborhood. Your participation is important and matters to us as we strive to demonstrate our professional best.

Officer Kevin Downs

Many of you have also reached out asking about Officer Kevin Downs and his recovery. Officer Downs is making tremendous strides in his recovery. He and his wife were able to join his fellow officers at our annual Taraval Christmas party. Officer Downs acts as inspiration for so many of us as he has faced an officer's deepest fear and has done so with courage and bravery. We look forward to seeing Officer Downs back with us in 2017!

An interview by ABC7's Vic Lee of Officer Kevin Downs about his "Miraculous Recovery"



SFPD OFFICER SHOT IN HEAD MAKES MIRACULOUS RECOVERY

Friday, February 03, 2017 12:13AM

abc7news.com/news/injured-sf-officer-makes-miraculous-recovery/1734476/

In closing, if you have any questions, concerns or suggestions that impact your neighborhood, please let me know. You can email me directly at denise.flaherty@sfgov.org or you can call me at 415-759-3100 (for more complete Message: taraval.org)

Sunday • Jan 1

Battery

2:25 am | 600 Irving St

The victim was standing in the front of a bar when the suspect, looking confused and with a bloody face, came running towards him. He asked the suspect if he was ok, and the suspect punched him in the face. The suspect, drunk, said he didn't remember what had happened. He was cited and an ambulance was summoned.

Vandalism to Vehicle and Property

1:36 am | 2200 46th Ave

After a party at her house, the victim said an uninvited guest returned to look for his keys. After she asked him to leave, once outside, he and a friend started throwing things at the windows. Another suspect also broke the window to a vehicle parked in front of the house. Officers located the suspects; three suspects were arrested, one cited and one released.

Battery – Threats

3:49 am | 1900 33rd Ave

Seeing the suspect attacking a female outside their house, the victims tried to pull the suspect away from her but he pulled a knife and threatened them. Officers located the suspect while an unknown man and woman told the suspect to get in their car. But he refused and they drove away. The suspect was arrested.

Mon • Jan 2

Possession for Sales

1:27 pm | Undisclosed

A suspect selling prescription narcotics was detained by officers executing a search warrant which produced evidence. The suspect was arrested.

Lodging without Permission – Resisting

4:24 pm | Great Hwy & Sloat Blvd

At a homeless encampment; the victim said the suspects had been there for a month

and threatened to kick her dog when they walked by. Officers found the suspect's tent under several brush trees and a dirt mound, but they refused to come out and had to be forcefully removed. one suspect had ID and was cited, but the second had none, and he was arrested.

Battery

3:50 pm | 2300 Taraval St

A man at a bar said a woman complimented him on his hair, but shortly after, a man knocked him off his seat and punched him. They fled together.

Wed • Jan 4

Robbery – Conspiracy

8:30 pm | 3200 20th Ave

The victim was sitting in front of a coffee shop when he was approached by a group of strangers, who sat across from him. The suspect told him not to make a scene while they go through his pockets. The suspect stole his money, then left with his group. When the victim called the police, they located the suspect and detained three others. The suspect was arrested.

Battery

8:10 am | 1800 Irving St

The suspect, who had been told to stay away from the store, demanded a glass of water before agreeing to leave. When she was given the water, she threw it at the employee before leaving the store. Officers located and cited the suspect.

Robbery

7:47 pm | 1200 Irving St

A store employee saw the suspect steal an item. When the victim tried to stop the suspect outside the store, the suspect pulled out a pair of scissors to threaten the victim. Officers located and arrested the suspect.

Thu • Jan 5

Stolen Vehicle

2:14 pm | Junipero Serra Blvd & 19th Ave

Police Officer Involved Shooting in Taraval District

On January 6, 2017, at 3:51 AM, two uniformed San Francisco Police Department officers responded to the 500 block of Capitol Avenue regarding a restraining order violation between two neighbors. The suspect was reported to have been hitting a shared wall in the middle of the night. The officers made contact with the suspect at his residence. The contact became physical and during the incident, pepper spray was deployed, an officer's baton was taken and shots were fired by at least one officer.

The suspect barricaded himself inside his residence and refused orders to come out. Additional units arriving on the scene attempted to convince the suspect to surrender. The suspect remained inside and called 9-1-1 dispatchers, stating that he had been shot.

The SFPD Crisis Hostage Negotiation Team (C-HNT) and Tactical Unit arrived on scene. The C-HNT officers attempted to negotiate the suspect's surrender. The suspect did not surrender. Due to exigent circumstances, tactical officers forced entry into the residence so that they could get the suspect medical attention. The suspect taken into custody without further incident and immediately transported to the hospital with non-life threatening injuries.

The initial responding officers sustained injuries during the incident. One officer sustained a head injury. Both were transported to the hospital where they were treated and released with non-life threatening injuries.

This is an active and ongoing investigation in its early stages. All information is preliminary. The SFPD Homicide Detail and Internal Affairs Division will be conducting separate investigations. The San Francisco District Attorney's Investigators and Office of Citizen Complaints (OCC) are also investigating.

E-mail: sfpdmediarelations@sfgov.org

Media Briefing and Body Worn Camera Footage

sanfranciscopolice.org/article/media-briefing-regarding-body-worn-camera-footage-january-6th-officer-involved-shooting

Responded to a tip of erratic driving, a computer check determined that it was stolen. Officers arrested the driver at the I-280 off ramp to Pacifica.

Vandalism to Property

10:16 pm | 1300 Ocean Ave

After gathering and reviewing information, a SIT inspector identified a suspect in the vandalization of a church. After a warrant was issued, officers located the suspect. The suspect was arrested.

Fri • Jan 6

Arson

3:03 am | 3600 Judah St

Responding to a report, officers discovered a burning garbage can that had spread to a discarded Christmas tree and a vehicle. They partially put out the fire before the arrival of SFFD.

Embezzlement

5:47 pm | 3200 20th Ave

A loss prevention employee, reported that they observed the suspect, an employee, select several items of clothing and entered the fitting room, but exit empty handed. The witness searched the fitting room directly afterwards and did not locate the missing items. After questioning, the suspect admitted to the theft and was cited.

Assault

2:48 pm | 200 Broad St

The victim said, during an argument, her brother grabbed her neck and threw her onto the floor causing her to slam her head. The suspect then fled.

Attempted Robbery – Assault

7:52 pm | 1800 Irving St

The victim refused to give the suspect money to buy beer so he hit him. A witness said the suspect

had initially asked for water and left but soon the victim ran into the store with the suspect chasing after him and hitting him with a bottle of beer. The suspect was arrested.

Sat • Jan 7

Burglary – Vandalism

9:08 am | 1200 29th Ave

When the victim found the security camera on a vacant house was not working, he reviewed previous footage showing the suspect climbing into the house. Later, when the suspect broke back into the house and damaged approximately \$7500 worth of property inside, he was arrested.

Burglary – Possession

of Stolen Property

5:12 pm | 2300 14th Ave

Via a security camera feed, the victim saw the suspect reaching under his gate and take a package that had been delivered. The suspect, was positively identified through a video conference. Officers arrested the suspect.

Sun • Jan 8

Battery

9:01 pm | Address Confidential

The victim said she requested that the suspect leave, multiple times, but he refused until he found his ID card. When she moved the suspect's items to the front door, he hit her. The suspect was arrested.

Mon • Jan 9

Battery

4:18 pm | Magellan Ave & Sola Ave

A woman said the suspect walked into the street suddenly and she had to stop her car abruptly. When the suspect started cursing at her, she responded by yelling back. Then he punched her through an open window and walked away.

Tue • Jan 10

Robbery

2:48 pm | 3200 20th Ave

The victim said she was inside a bathroom when the suspect pushed her from behind. The suspect then stole her purse and searched it for cash before fleeing through the emergency exit.

Thu • Jan 12

Battery

5:16 pm | 33rd Ave & Quintara St

A woman said she was getting into her car

Cont. p. 18

BUYERS & SELLERS REPRESENTED

“They did a great job from start to finish and clearly really love what they do. The best in the business.”

— Karen & Paul, Lawyer + Electrician, Sellers

SF Real Estate from the Experts.

Kevin K. Ho ESQ.

415.297.7462

TOP PRODUCER | REALTOR

kho@vanguardsf.com

SBN 233408 | BRE 01875957

Jonathan B. McNarry

415.215.4393

TOP PRODUCER | REALTOR

jbm@vanguardsf.com

BRE 01747295



KEVINANDJONATHAN.COM

VANGUARD PROPERTIES

Tickled Pink!

Magnificent Magnolias Bloom

Visitors admire the magnolia sprengeri “Diva” at the SF Botanical Gardens in Golden Gate Park Photo: Saxon Holt

It’s gotten nippy out there and that means that the gorgeous winter bloom of San Francisco Botanical Garden’s magnificent magnolias ... starting mid-January, nearly 100 gorgeous trees, many rare and historic, typically begin to bloom ... the huge saucer-sized pink and white blooms are really stunning on the bare branches ... the photo opps are endless. Instagram heaven.

We celebrate this bloom each year with **free Magnolia Walk maps**, docent-led tours, special signage, and a magnolia mobile app, and unique classes.

The bloom usually rolls out from mid-January into March. It’s one of the city’s most breathtaking natural marvels as nearly 100 magnolias at the Botanical Garden in Golden Gate Park burst into

bloom. Velvety silver buds on the often bare branches of these elegant trees, many rare and historic, open into dazzling pink, magenta, and white flowers, filling the wintery Garden with dramatic splashes of color and sweetly fragrant scents.

The annual floral spectacle, with trees reaching 80 feet, is at its peak this year from mid-January through March, and visitors to the Garden can take advantage of free Magnolia Walk maps, docent-led tours, special signage, a magnolia mobile app, and more to celebrate and learn more about these magnificent magnolias.

San Francisco Botanical Garden is home to the most significant magnolia collection for conservation purposes outside China, where the majority of species originated. Its current collection includes

Magnolia doltsopa Photo: Saxon Holt

44 species, 42 cultivars and 16 hybrids or varieties, including many important specimens from Asia.

January 15 – March 31;
open every day
7:30am to 5pm (February – early March)
7:30am to 6pm (2nd Sunday in March – April)

SF Botanical Garden,
Golden Gate Park, 9th and
Lincoln Blvd.

SFBotanicalGarden.org,
(415) 661-1316



Above:
Magnolia denudata
Photo: Saxon Holt
Right:
Magnolia x soulangeana
Photo: Saxon Holt
Far Right:
Magnolia stellata Photo:
Nina Sazevich

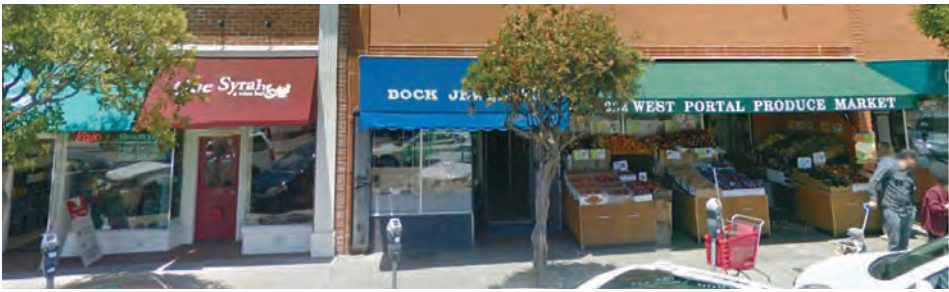
Magnolia denudata Photo: Peter Stephens



February

It's a New Year...It's hard to believe but here we are in 2017. The New Year is upon us and with that we have sworn in a new President in Washington, (lots of bluster and scowling, let's see how it goes); a new State Senator; Broken ground on the new Warriors' arena in Mission Bay, and have finally gotten real winter-time rain and snow, albeit with the mudslides and downed trees that go along with the deluge. Of course, we're still waiting for a new GM and coach for the 49ers...

And we are celebrating our 30th year of neighborhood journalism starting with the original *Westside Observer* (1987-1990), the *West of Twin Peaks Observer* (1990-2008), and the current *Westside Observer* (2008-present). As a partner with the San Francisco Neighborhood Newspaper Association, the SFNNA hyper-local publications bring outstanding local journalism about each SF neighborhood to the doorstep and communities at large. We are fortunate to have outstanding papers in SF such as the *West Portal Monthly*, the *Ingleside-Excelsior Light*, the *Sunset Beacon*, the *Richmond ReView*, the *Marina Times*, the *Potrero View*, the *Central City Extra*, the *Castro Courier*, the *HATCH Beat*, the *Noe Valley Voice*, the *SF Bay View*, *El Tecolote*, the *New Fillmore*, and of course the *Westside Observer*. These publications reach over 300,000 readers each month and bring local issues and content home.



An era is ending...Ernest Bock Jewelers at 226 W. Portal Avenue are closing in the near future, as the owners have decided to retire. They are the last of the 4 jewelers who once were on the Avenue, and will be having a sale to help close out the business.

Thanks, Roger...at the January meeting of the West of Twin Peaks Central Council, longtime **President Roger Ritter** announced that he is stepping down as he and the family are relocating to the Washington, D.C. area in the spring. A friend to this columnist, he has served his homeowner association and the WOTPCC very well during his tenure and provided me with great insight and advice on all aspects of the WOTPCC. Best of luck out there in "ol' Virginnie." (That's Virginia for those who haven't lived there...)



Right Around the Corner... The SF Rec and Park Department will conduct the ground breaking of the Geneva Community Garden on Thursday, February 9 from 4 to 5 PM at Geneva and Delano Avenues in District 11. Drop by and see what they are planning.

Job Fair...The City of San Francisco will be holding a **Job Fair** on Saturday, February 11 at the Mission Recreation Center (2450 Harrison Street) from 10 AM to 4 PM. Agencies ranging from SF Rec and Parks, SF Airport, Sheriffs, Fire, School District and City College will be talking to attendees about job openings, resources and job training. The US Post Office will also be represented at the job fair. For more information call 415-831-2726.



Soccer anyone... Did you know that the North American Soccer League has a new team in SF? Based at Kezar Stadium, the **SF Delta's** will have their opening night at the historic stadium on March 25. Tickets are available for the opening night match as well as other upcoming matches, starting at \$17 per ticket. For more information go to: sfdeltas.com.

Arts Alive! Afternoon Art

When: 1 pm-4 pm, Saturdays in MARCH
Where: Randall Museum at Mission Art Center
745 Treat Avenue

Randall Museum & Mission Art Center are facilities of the San Francisco Rec & Park Dept.



RANDALL
MUSEUM

AFTERNOON ART DROP-IN ART WORKSHOPS:
(All children under 7 must be with a paying participating adult)

March 4: **ROBOT SCULPTURES** - Design and assemble a one-of-a-kind wood and metal robot sculpture.

March 11: **SHAMROCK CARDS** - Get ready to celebrate St. Patrick's Day by making a mosaic Shamrock Card to share with a lucky leprechaun.

March 18: **CLAY BIRD NESTS** - Create a clay bird nest with eggs and a mother bird to welcome in an early spring.

March 25: **LEAF-PRINTED CLAY PLANTER** - Spruce up your windowsill with a leaf-printed clay planter.

Drop-in \$3 per child/\$5 per parent-child combo / Museum admission is FREE!
Public Info: (415) 695-5014 or www.randallmuseum.org

Do you have an event, a neighborhood fact or just an observation to share? Drop us a line at mitch@westsideobserver.com and share your ideas or just let us know what you think.



**CHASE AWAY THE WINTER BLUES
WITH THREE CLIFF HOUSE FAVORITES**

Wine Lovers' Tuesday

Every Tuesday bottled wines are half price*
all day with purchase of an entrée!

The Bistro Wednesday Night Prix Fixe

Three courses for \$30.00 4:30 - 9:00 pm

Live Jazz in the Balcony Lounge

Every Friday night from 7:00 pm - 11:00 pm

Valet parking every night after 5:00 pm. *Some restrictions apply.
Promotions are not valid on holidays and Valentine's Day.



1090 Point Lobos 415-386-3330 www.CliffHouse.com



FOG FAR OUT GALLERY

Saturday, February 4 - Saturday, February 25, 2017

Janet Norris

Living dangerously

Thur - Sat • 12 - 6 pm, or by appointment.
3004 Taraval @ 40th Avenue • 415-463-5537



Serving Food As Good As Our Prices Are Low



TENNESSEE GRILL

1128 Taraval St. • (415) 664-7834 • Open 6am-9pm
Where Friends Meet

Proudly Serving The Families of West of Twin Peaks

**"Caring Service
is our
Highest Priority"**



The Bud Duggan Family Serving the Bay Area Since 1903

Duggan's Serra Mortuary, Daly City

415 587-4500

FD1098

Driscoll's Valencia St. Serra Mortuary, SF

415 970-8801

FD1665

Sullivan's Funeral Home, SF

415 621-4567

FD 228



Parking Available at all locations
Most Convenient San Francisco/Peninsula Locations
Traditional and Cremation Services
Contact our Pre-Arrangement Department for your

**DUGGAN'S
SERRA MORTUARY**


**FREE Personal Planning Guide
"My Funeral, My Way"**

VISA, MASTERCARD & DISCOVER ACCEPTED

dugansserra.com • driscollsmortuary.com • sullivanfuneralandcremation.com

February Calendar

75 YEARS AGO-WAR GRIPS HOME FRONT • SF MUSEUM & HISTORICAL SOCIETY



Tue, Feb14 | 7:30 – 9pm | After the Japanese attack at Pearl Harbor in 1941, there was fear, bordering on hysteria, that San Francisco and its surroundings could be the logical mainland target for enemy submarine or air attacks. In commemoration of the 75th anniversary of the U.S. entry into World War II, John Freeman will examine the profound changes brought on by these events: rationing, salvaging, and volunteering; suspicions of espionage resulting in the detention of German and Italian residents and the denial of civil rights to all Japanese residents; the arrival of military personnel to embark to the Pacific Front; and new residents lured to work in the massive local war industry. Homefront San Francisco was dynamic and stressful, and would have profound physical and social changes. Roosevelt Middle School Auditorium, 460 Arguello Blvd (at Geary) *Photo: Wikipedia.com*

Gung Hay Fat Choy!



Year Of The Red Rooster

SEN NIN FAI LOK! (HAPPY NEW YEAR)

The Rooster is the 10th animal in the Chinese Zodiac. The Year of the Rooster, began January 28th. New Year festivities begin with the new moon on the first day and end on the full moon 15 days later. (See Feb 11).

People born in the Year of the Rooster (1921, 1933, 1945, 1957, 1969, 1981, 1993, 2005, and 2017) are very observant, hardworking, resourceful, courageous and talented. Roosters are very confident about themselves. Good career choices for Roosters are sales person, restaurant owner, hairdresser, public relations officer, farmer, athlete, teacher, journalist, travel writer, dentist, surgeon, soldier, fireman, security guard, police officer.

- EVERY SUNDAY • FARMERS MARKET**
- Every Sun | 9 am–1 pm** | Stonestown rear parking lot: at Stonestown Galleria (19th Ave @ Winston).
- EVERY SUNDAY • VICTORIAN TOUR**
- Sundays | 2 pm** | Victorian era architecture of the city's first suburb - Lafayette Square. SF's illustrious history, steep streets & fabulous views! 1801 Bush St. garden. Donations OK. MUNI 1, 3. sfcityguides.org
- EVERY TUE/THU /SAT • GET IN SHAPE!**
- Tue/Thu | 8:30 am | Sat: 9 am** | Get into shape. FREE exercise classes. SF State & Rec and Park. Turf field at Minnie & Lovie Ward Park, 650 Capitol. sfsu@gmail.com, www.100citizens.org
- EVERY TUES • QUE SYRAH HAPPY HOUR**
- Every Tue Happy Hour | 4–8 pm** | Que Syrah Wine Bar. Take \$1 off each glass, 10% off each bottle (consumed on site). 230 West Portal Ave 731-7000
- EVERY THURS - NIGHTLIFE**
- Every Thu | 6–10 pm** | The Academy of Sciences brings live music, science, mingling and cocktails. GG Park \$15 (\$12 Members). calademy.org/nightlife.
- JAZZ FRIDAYS @ THE CLIFF HOUSE**
- Every Fri | 7–11 pm** | The Balcony Lounge at the Cliff House hosts jazz every Fri night. 1 Seal Rock. cliffhouse.com/home/jazz.html.
- FRIDAY NIGHTS @ THE DEYOUNG**
- Every Fri | 5–8:45 pm** | Music, poetry, films, dance, tours and lectures. Cafe: special dinner, no-host bar. Art-making children/adults. deYoung Museum, GG Park. deyoung.famsf.org/deyoung/fridays
- FRIDAYS @ OFF THE GRID/FT. MASON**
- Every Fri | DJs 5-7:30/Bands 7:30-10: pm** | Over 32 food trucks and street food carts in a huge circle with a full bar and bands in the middle? That's a party! Free. Ft. Mason Ctr. Two Marina Blvd.
- SAT • FREE E-BOOKS**
- Do you have an eReader, tablet computer or smartphone? Did you know that you can check out eBooks from the library for free? Download more than 40,000 eBooks with one-on-one help from a librarian. Bring your Kindle, iPad, smartphone or other mobile device with you. 20 minute appointments every Saturday

- between 3:00 and 4:00 p.m. based on availability. To RSVP email: info@sfpd.org with preferred date/ time, and device. Stong Room on the 1st floor.
- DAILY • BOOK-A-LIBRARIAN**
- Learn Basic Computer Skills—searching databases, setting up email, or surfing the web. Basic mouse skills required. Call 355-2825 to make an appointment. Merced Branch Library, 155 Winston Dr.
- DAILY • ART OF PINOCCHIO**
- 10 am - 6 pm** | *Wish Upon a Star: The Art of Pinocchio*. Until Jan 9. Discover how one of the most influential animated films in history was produced. Walt Disney Museum, 104 Montgomery, Presidio. Closed Tues.
- ONGOING • BUTTERFLIES & BLOOMS!**
- Through - June 30** | Get eye to eye with a butterfly in the exhibit Butterflies & Blooms as the Conservatory of Flowers in GG Park's delightful living butterfly exhibit finally returns. JFK Drive, GG Park.
- TUE • 34TH DINNER A LA HEART**
- Tue Feb 7** | A SFtradition for over 30 years—choose a Bay Area restaurant, make reservations through Institute on Aging, and enjoy a unique dining experience while supporting their programs and services. Treat yourself to an exclusive prix-fixe dinner. From \$85 - \$250 per person. Proceeds help thousands of seniors remain independent and healthy. Shabana Siegel at ssiegel@ioaging.org or call 415.750.4156.
- WEB • A QUESTION OF COLOR**
- Wed Feb 8 | 7 pm** | A landmark 1897 case — John Harris, an African American, sued Adolph Sutro, the former mayor. The Harris victory would be lost for 61 years! A pivotal moment in the evolution of Civil Rights law for California, the nation and the world. Merced Branch Library, 155 Winston Dr.
- THU • AUTHOR ALAN BURDICK**
- Thu Feb 9 | 7 pm** | Time is the most commonly used noun in the English language; it's always on our minds and it advances through every living moment. Why time flies? Bookshop West Portal. 80 West Portal.
- THU • NOB HILL WALKING TOUR**
- Thu Feb 9 | 11 am** | Once the rococo palaces of the old railroad and silver kings, expect architectural tidbits about a great cathedral, prestigious hotels.

San Francisco's

SOURDOUGH PIZZA

since 1975

Join "Goat Hill Rewards"

Fast delivery!

Order online - www.goathill.com



- SOMA**

Delivery • Pick up

171 Stillman St

415-974-1303
- Potrero Hill**

Dine in • Pick up

300 Connecticut St

415-641-1440
- West Portal**

Counter Service • Delivery • Pick up

170 West Portal Ave

415-242-GOAT (4628)

ORDER ONLINE
www.goathill.com



Elegance, urbanity, and fabulous views. \$15 reserve by 2 pm, Feb 7. sfhistory.org/events/walking-tours

THU • BUYING A BRIDE

Thu Feb 9 | 6 pm | *The Complicated History of Mail-Order Brides and Grooms in California History*. Marcia Zug's book explores a part of US life since Jamestown. "Tobacco Wives," in Virginia, gold rush brides, Japanese picture brides and same-sex mail-order grooms today. Calif Historical Society, 678 Mission \$5

THU • GUARDSMAN CELEBRITY DINNER

Thu Feb 9 | 6 pm | The Celebrity Dinner and Sports Auction has been a signature fundraising activity of The Guardsmen for 28 years and typically raises enough money to send over 750 Bay-area at-risk youth to summer camp. Fairmont Hotel. \$250 & up,

FRI-SUN • FREE DAY-ACADEMY OF SCIENCES

Fri-Sun, Feb 10-12 | Fri-Sat 9:30 am – 5 pm | Sun 11 am - 5 pm | Neighborhood FREE days at the California Academy of Sciences for zip codes 94127, 94131 and 94132. Proof of residence required. 55 Music Concourse Dr. GG Park.

FRI - SUN • I'M ALWAYS DRUNK IN SF

Feb 10-12 | Feb 17 - 19 | 8 pm | Sun 7 pm | A tribute to the culture and history of our great city by some of the greatest writers - Jack Kerouac, Mark Twain, Jack London, H.I. Mencken And Gary Kamiya. Subterranean Shakespeare Theater/Shelton Theater, 533 Sutter St.

SAT • OPEN HOUSE/W PORTAL BRANCH



Sat Feb 11 | 1 pm - 5 pm | Honor our beautiful 1939 New Deal Library at our Annual Open House Party! All ages are welcome at all activities. Tabling and very brief talks by nonprofits serving the West Portal Neighborhood and beyond throughout the afternoon.

1:00-1:30 Welcome and Laughter Yoga
1:30-2:30 Armenian Dance / Karoun Dance Ensemble of the Saint John Armenian Church
3:00-4 Create a simple handmade book!
4:00-4:30 New Deal Art and Architecture in SF /Harvey Smith of the Living New Deal project
4:45-5 Laughter Yoga—Laughing for no reason !

SAT • WINTER PLANT SALE

Sat Feb 11 | 9 0am-1 pm | It's planting season! California native plants are a great addition to any garden or landscape, and provide food and home for native insects such as bees and butterflies. Many species of locally native and drought tolerant plants. Sutro Native Plant Nursery | 476 Johnstone Dr.

SAT • CHINESE NEW YEAR PARADE

Sat Feb 11 | 5:15-8pm | Market/2nd to Kearny / Jackson. One of the top ten Parades in the world the SF tradition started in the 1860's by the Chinese as a means to educate the community about their culture, the Parade and Festival have grown to be the largest celebration of Asian culture outside of Asia. Parade highlights include elaborate floats, lion dancers, folk dancers, costumed elementary school groups, marching bands, stilt walkers, Chinese acrobats, and a 268 foot long Golden Dragon ("Gum Lung"). Live t on KTVU.

DAILY • TULIPOMANIA FESTIVAL

Sat Feb 11 - Fri Feb 19 | Stroll down the pier and enjoy a spectacular and colorful display featuring over 39,000 tulips and seasonal garden favorites. Take a self or guided tour and learn helpful gardening tips. Free, 415-705-5500, pier39.com

SUN • ALL BACH CONCERT / 32ND SEASON

Sun Feb 12 | 2 pm | The Avedis Chamber Music Series - the majestic Trio Sonata is followed by the B minor Orchestral Suite, two arias from the St. Matthew Passion and St. John Passion, and the Brandenburg Concerto No. 5 concludes. Legion of Honor Lincoln Park 100 34th Ave. Tix: \$27/Sen/Stu \$17.

SUN • SOUTHSIDE WITH YOU

Sun Feb 12 | 1-3 pm | Lawyers Michelle Robinson (Tika Sumpter) and Barack Obama (Parker Sawyers) spend their first date visiting the art museum, eating lunch, watching *Do The Right Thing*, getting ice cream, and sharing a first kiss. 2016 Sundance Film Festival. Main Library, 100 Larkin St.-Koret Rm.

TUE • GROUNDING FOR HEALTH

Tue Feb 14 | 6:30 pm |An ancient practice, now known as earthing or grounding, is believed by some to enhance health by reducing inflammation. Walking barefoot or in leather-soled shoes or in shoes with grounding plugs, as well as sleeping or lying, on earth, grass, etc. West Portal Branch, 190 Lenox.

THU • DIANNE REEVES

Thu Feb 16 | 7:30 pm | A Valentine's Day tradition, whether putting a personal stamp on liltng Brazilian standards, exploring contemporary fare, or interpreting American Songbook classics by Gershwin, Porter and Berlin, Dianne Reeves always gets to the heart of a song.\$30-85. SFJAZZ Center 201 Franklin St (at Fell)

THU • HEROS & HEARTS S LUNCHEON

Thu Feb. 16 | 11:30 am-1:30 pm | AT&T Park Honoring community heroes and features heart art created by local artists as well as a special performance of Beach Blanket Babylon to benefit the SF General Hosp. Foundation. \$300, 206-5928, sfghf.org

FRI • THE JUNGLE BOOK

Fri Feb 17 | 3:30 pm | An epic about Mowgli, a man-cub who's been raised by wolves, but fearsome tiger Shere Khan threatens. A captivating journey of self-discovery. Ortega Branch, 3223 Ortega.

SAT • KIDS BLACK HISTORY MOVIES

Sat Feb 18 | 4-4:45 pm | Award-winning picture books come to life celebrating some of the best in children's literature from African American authors and illustrators. *Last Stop on Market Street* (winner of the 2016 Newbery Medal), *Trombone Shorty* (winner of the 2016 Coretta Scott King Illustraor Award), and *A Dance Like Starlight* (an ALA Notable Book for Children 2015). Popcorn. West Portal Branch, 190 Lenox.

TUE • AUTHOR DEBORAH CROMBIE

Tue Feb 21 | 7 pm | Scotland Yard detectives are drawn into separate investigations that hold disturbing and deadly complications for their own lives in this mystery in the bestselling series. Bookshop West Portal, 80 West Portal.

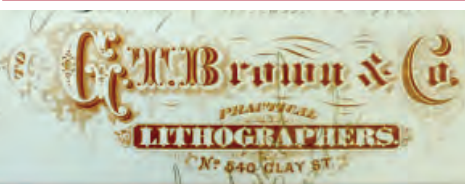
TUE • COMMUNITY SAFETY MEETING

Tue Feb 21 | 7-9 pm | Meet with Captain Denise Flaherty at Taraval Station. Taraval Community Relations Forum Meeting: 2345 24th Ave.

TUE • SIX ROSES JAZZ

Tue Feb 21 | 7 pm |Back by popular demand, Six Roses take us on a musical journey with a solid performance of Jazz renditions, creative originals. Family! friendly. Parkside Branch Library, 1200 Taraval.

WED • ARTIST GRAFTON TYLOR BROWN



Wed Feb 22 | 7 pm | (1841-1918) lived for art. Born in Harrisburg, PA, into a free African American family, Brown reinvented himself, passing into white society in San Francisco in 1861. Talented, self-confident, and aggressive, he advanced his career as a commercial artist. G.T. Brown & Co. Lithographers produced: city views, maps, sheet music, advertising posters, mining stock certificates, and billheads (invoices) of great variety and consistent artistic excellence. Dr. Robert J. Chandler. Merced Branch, , 155 Winston Dr.

THU • AUTHOR ETHEL ROHAN

Thu Feb 23 | 7 pm | At four hundred pounds, Billy Brennan can always count on food. From his earliest memories, food has always made everything better, until the day Billy's beloved son Michael takes his own life. Bookshop West Portal, 80 West Portal Ave.

THU • OMI NEIGHBORS IN ACTION

Thu Feb 23 | 7 pm | Supervisor Ahsha Safai at the OMI-NIA General Meeting, the last Thurs of the month. Temple UMC, 65 Beverly .

FRI-SUN • 65TH PACIFIC ORCHID EXPO



Feb 24-26 | Fri-Sat 9am-6pm, Sun 10am-5pm | Pacific Orchid Expo, the largest orchid show on the West Coast, thousands of orchids expands to include more gardening delights in a brand new venue: The Hall of Flowers in Golden Gate Park! 1199 9th Ave. Tix: \$11-30 @ eventbrite.com

SAT • TAI CHI SATURDAYS

Sat Feb 25 | 1:30 pm | Irene Lee leads a four-session introduction to this martial arts form. Learn why focusing the mind solely on the movements of Tai Chi helps bring about a state of mental calm and clarity.

Comfortable clothes. Ortega Branch, 3223 Ortega.

MON • CENTRAL COUNCIL

Mon Feb 27 | 7 pm | West of Twin Peaks Central Council meets to discuss local topics on the 4th Mon each month. No meeting in December. Forest Hills Clubhouse, 381 Magellan Ave. westoftwinpeaks.org

MON • TRUMP & SF / S.H.A.R.P

Mon Feb 27 | 7 pm | How the Trump Presidency will affect SF. Ben Tulchin, one of the city's foremost political pollsters and consultants will review the city's political here and now and provide an informed glimpse. sharpf.org - 1736 9th Avenue.

MON • WHAT TO DO NOW!

Mon Feb 27 | 7 pm | The election of Donald Trump shocked and dismayed progressives across the country. What We Do Now, a collection of passionate manifestos by some of the country's leading progressives, aims to provide a blueprint for how those stunned progressives can move forward. Michael Brune, Sierra Club and Trevor Timm, Freedom of the Press Foundation, in a discussion moderated by David Talbot. (*Season of the Witch, The Devil's Chessboard*) Bookshop West Portal, 80 West Portal Ave.

Local event? editor@westsideobserver.com Priority: Westside Events

At the Theater • Flora Lynn Isaacson & Linda Ayres-Frederick

For the 3rd Production in its 87th Season, RVP Presents

Emilie by Award-Winning Playwright Lauren Gundersen

The full title of this play is *Emilie: La Marquise du Châtelet Defends Her Life Tonight*. Our program tells us that Emilie du Châtelet was an 18th Century French philosopher, mathematician, physicist, and the toast of the Age of Enlightenment. So why then is she not *better* known?

Robyn Grahn brilliantly *resurrects* this fascinating personality. Brought back from the dead, Emilie is determined to answer the questions that haunted her dying moments on Earth. Was I right? Was I loved? As she travels back in time to visit key moments in her scientific and emotional journey, the full extent of her remarkably amazing legacy is revealed in this smart and surprising portrait of a true genius.

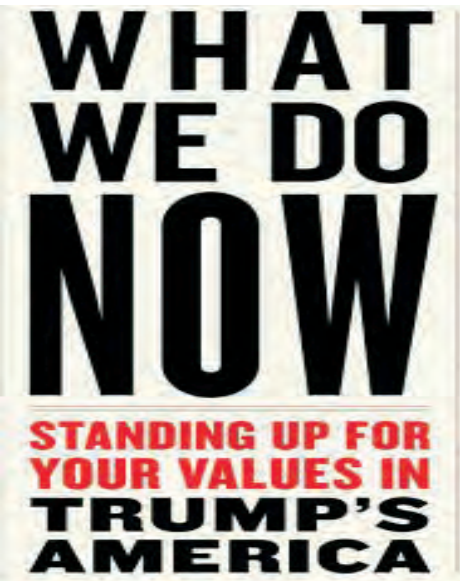
It's wonderful that playwright Lauren Gundersen is shining a light on Emilie du Châtelet. Her story is undeniably captivating as the daughter of a lesser Noble, and whose prodigious intellect was known as early in life as age 10 when she was brought to visit Sentenelle, the Head of the French Academy of Sciences, to discuss astronomy. By 12 she was fluent in Latin, Greek, Italian and German, as well as her native French. She used her talent in mathematics to become a successful gambler, a skill she plied in order to purchase the books she desired. An arranged marriage brought her the title of Marquessa, but after the birth of her third child, she resumed her studies and entered into perhaps the most important relationship of her life – with the Philosopher Voltaire.

Gundersen takes an interesting approach to telling her tale when, as the play begins, we find Emilie at Center Stage in a state of shock after having been *brought back to life*. She spends the rest of the play looking back at her career – explaining, justifying, rationalizing, and celebrating her accomplishments.

As an Enlightenment era philosopher and scientist, Emilie resided somewhat in the shadow of French literary giant Voltaire (solidly interpreted by Catherine Luedtke).

Playwright Gundersen gives the audience plenty to consider, both about *La Marquessa* du Châtelet's intellectual contribution and about biographical details, including her marriage to a nobleman military officer, and her mother (Tamar Cohn). It is a little confusing for the audience, as both Robyn Grahn and Neiry Rojo (who plays Emilie's daughter Soubrette) play the title character at various points. Further adding to the confusion are the multiple roles performed by Shoresch Alaudini (a superbly talented young actor).

Director Patricia Miller takes a big step in demanding *suspension of disbelief*



WED • GWPNA

Wed Mar 1 | 6:30 | Greater West Portal Neighborhood Assn meetings are open to all members and to the public, first Wed each Month. Playground Clubhouse, 131 Lenox Way. GWPNA.org



shines in a cameo as Emilie's domineering mother. Robyn Grahn steals the show with her impassioned interpretation of Emilie.

With so much scientific and mathematical jargon being bandied about, it would have been helpful if Director Miller

and her actors concentrated on bringing out the *human* side of Gundersen's characters. Instead we have a group of multiple castings – Neiry Rojo alternating as the young Emilie, her daughter, Voltaire's coquettish niece (who eventually lures him away) and Tamar Cohn and Shoresch Alaudini performing a multitude of roles. Likewise, Robyn Grahn's Emilie and Catherine Luedtke (a woman playing this great man of letters) seem like they inhabit separate worlds.

Michael Berg provides gorgeous period costumes. Sasha Oaks' wonderful set is masterfully constructed by Eugene DeChristopher and divided into 3 areas on the stage: Stage Right is Emilie's office, Stage Left is her apartment, and in Center Stage is where all the actors appear with the action – beautifully choreographed by Kavita Master with wonderful Sound Design by Billie Cox. The very effective lighting is designed by Patrick Toebe.

No surprise that the whole enterprise by the Ross Valley Players (which is *alive* with physical activity) should be congratulated for giving this difficult play a good try.

Emilie, written by Lauren Gundersen and directed by Patricia Miller, began January 13 and will run through February 5, 2017. For tickets/info go online to www.rossvalleyplayers.com or call 800/838-9555, and tickets for School Groups, call 415/456-9555 extension 3. All performances take place at The Barn, home of the Ross Valley Players, Marin Art and Garden Center, 30 Sir Francis Drake Blvd., Ross.

And coming up next will be *Bus Stop* by William Inge and directed by Christian Haines from March 3 to March 26. Flora Lynn Isaacson

Hiring Bloat (Cont. from p. 7)

Although I wrote in September that based on records provided by the City Controller's Office the Mayor had added 4,794 FTE's since taking office in 2010–2011, the *San Francisco Examiner* reported on December 14 that the number of FTE's Lee has added stood at 5,090. That's an increase of 296 additional FTE's. The *Examiner* reported the Mayor has ordered City departments to "stop growing."

So which is the accurate number of additional FTE's added by the Mayor since FY 2010–2011? 4,794? 5,090? Or a new number of potentially 7,897 FTE's?

I asked the City Controller on January 2, 2017 for clarification of the number of FTE's on the City's payroll on December 30, 2016. The Controller's staff lamely responded on January 12 that there were 34,005 "paid staff." Despite repeated follow-up requests, the Controller has still not confirmed whether "paid staff" and "FTE's" are synonymous terms, or the ending count of FTE's on December 30.

"Given these authorized numbers are for the fiscal year, the number provided to you previously [on January 12, 2017], of 34,005 paid staff, provides a snapshot in time accounting of City employees being paid as of the date you requested [January 2, 2017]. After the calendar year 2016 data becomes available, we can provide additional details on payments made to all employees during the calendar year."

If the City did increase the number of FTE's from 30,626 at the end of June 2016 to potentially 34,005 FTE's six months later, that's a significant increase of 3,379 additional FTE's — probably **on top of** the 5,090 FTE's the *Examiner* reported on December 14 that the Mayor has added since taking office. Again, if the 3,379 additional FTE's proves to be accurate the Mayor may have added at least 7,897 FTE's — a sobering 30.2% increase — during his tenure.

Mayor's Lip Service

So far, the Mayor has paid mere lip service to limit the size of City government employees.

Mayor's Skimpy Rebalancing Plan

Mayor Lee submitted a skimpy Rebalancing Plan four-page memo to Board president London Breed, Supervisor Mark Farrell as the immediate-past Chair of the Budget and Finance Committee, and City Controller Ben Rosenfield on December 8, 2016 that notes he has "cancelled" budget set-asides for homelessness services and transportation included in his so-called "balanced budget" he proposed on June 1, 2016.

The Rebalancing Plan memo lamely noted the Mayor would release "budget instructions" to [City] Department Heads also on December 8, in which he would "ask them to reduce General Fund support by 3% in each of the two upcoming budget years (resulting in a cumulative 6% reduction in the second year of the budget)."

Comically, the Mayor opined that he would "be advising all departments that they should not put forward in their budget submissions any net new positions [FTE's] and should work diligently to restrict overtime costs." That's rich: Here we have the King of a Hiring Binge telling City department heads not to add new FTE's during the next two fiscal years, after he's added at least 5,090 FTE's himself.

Weak Dog-and-Pony Show:

Department Budget Instructions

Next, Mayor Lee followed up with his December 13 "Budget Outlook and Department Instructions" 30-page PowerPoint presentation. It was a weak dog-and-pony show.

Slide #14 rhetorically asked why deficits are on the rise again. Two of the Mayor's explanations included rising employee costs largely related to pensions for City employees, and increases in City positions — meaning his hiring binge — that continue to grow.

Gee, really? Lee didn't clarify that the number of FTE positions have grown

considerably during his watch, or that for each new FTE position that qualifies for a City pension the City's employer-share of pension contributions rises concomitantly. Another reason a complete audit is needed of just how many positions the Mayor has added to the budget is San Franciscans deserve an analysis of how much employer-share of pension contributions have climbed during his hiring binge.

Slide #20 noted the City has added 5,090 FTE's for an 18% growth since Lee's first budget submission in FY 2011–2012. The Mayor noted "new FTE's also contribute to overall future deficits [since] employee benefits are rising faster than inflation." Mayor Lee noted the City "must take a disciplined approach to future growth [in FTE's] to ensure this level of total FTE's is sustainable."

Now six years into his tenure, is the Mayor suddenly going to become "disciplined"? Didn't Lee consider whether his hiring binge was "sustainable" at the time he approved each new FTE?

On slide #23, the Mayor appears to have found his *kahunas* when he indicated "Departments should not grow budgeted and funded FTE count[s]." If City departments can identify new sources to increase revenue by 3% in each of the two-year budget cycle, they may **not** have to consider any FTE reductions, and they may be able to sneak in "growing" the number of budgeted FTE's!

5,090 ... and Counting

If the City Controller's January 12 estimate that we may now have 34,005 FTE's at the end of December 2016 holds true, that's an increase of 3,379 FTE's. Do we add them to the 5,090 reported in the *Examiner* and the Mayor's December 14 Budget Outlook presentation?

If we are up to 7,897 FTE's hired during Ed Lee's watch, how many actual full-and part-time employees does that translate to? Way above the 40,397 full-and part-time employees as of June 30, 2016?

This bears repeating: The City Controller's Office admitted in December 2015 that of the \$42 million in the City's increased employer-share of pension contributions projected for FY 2016–2017, fully \$14 million — 33.3% — was a direct result of adding new City employees. The math is simple: more employees, the higher employer-share of pension contributions.

Should increases to the City's employer-share of pension contributions continue at this 33% rate, how much in actual dollar amounts will be attributable solely to the continued piling on of additional patronage-based FTE's to the City's payroll? How much more will taxpayers be on the hook for contributing to shore up the Pension fund?

The 2010 U.S. Census Bureau reported San Francisco then had a total population of just 805,235. Today we have an estimated population of 864,816, representing a 7.4% net increase in City residents.

So why has the City added between 4,794 and 7,897 new FTE's to the City's payroll — at least a 18.4% increase, if not a 30.2% increase if the FTE's have actually shot up to 34,005 — to accommodate approximately 60,000 new San Franciscans, a 7.4% net increase in population? Is anything out of whack here between a modest increase in the population, and the Mayor's glut of a hiring binge?

Who's auditing the patronage hiring-binge cookie jar? Anybody?

When it comes to monitoring, auditing — or ending — Mayor Lee's six-year hiring binge, I'm reminded of prominent broadcast journalist Rachel Maddow's admonition: *Watch this space.*

The full version of this article will be posted on the Westside Observer's web site and at www.stopLHHdownsize.com.

Monette-Shaw is a columnist for Westside Observer and a retired City employee. He received a James Madison Freedom of Information Award in the "Advocacy" category from the Society of Professional Journalists—Northern California Chapter in 2012. Feedback: monette-shaw@westsideobserver.com.



HOME MATCH
SAN FRANCISCO
MATCHING PEOPLE. MATCHING HOMES.

HOMEOWNERS

- Have an extra room in your home?
- Need additional income or help around the house?

HOMESEEKERS

- Live, work, or study in San Francisco and looking for affordable housing?

HOME MATCH CAN HELP YOU!

We provide interviews, background checks, and support throughout the housemate matching process.

For a limited time, **HOME MATCH** is offering **CASH INCENTIVES** for referrals resulting in successful matches!

CONTACT US TODAY FOR AN APPOINTMENT!
415-351-1000 | info@homematchsf.org



National Park Service Places Hold on Rule for Dog Management at Golden Gate National Recreation Area

The National Park Service is putting on hold the signing of the Record of Decision and the publication of the Final Rule for Dog Management at Golden Gate National Recreation Area.

The decision comes in response to requests from members of Congress to extend the waiting period for the Final Environmental Impact Statement. This pause will also allow the National Park Service to conduct a review of certain records being released in response to an ongoing Freedom of Information Act (FOIA) request related to the park's Dog Management plan and rule.

To date, the National Park Service has released more than 260,000 pages of documents dating as far back as 1999 in response to the FOIA request. As part of its ongoing release of records under FOIA, in late-December 2016, the Park Service learned that a former park employee had used personal email for official communications related to the Dog Management Plan planning process. Upon learning this, the Park Service contacted the former employee and obtained his cooperation to conduct a search of his personal email accounts for agency records related to the Dog Management Plan planning process. As a result of that search, the Park Service recovered approximately 137 pages of emails that were responsive to the FOIA request. Those FOIA records will be released and posted today at <https://www.nps.gov/goga/learn/management/dog-management-records.htm>, "Records Released January, 2017".

The Park Service will conduct an independent inquiry into whether personal email was used in a manner that is not consistent with applicable laws and policies, and if so, whether its use affected the planning and rulemaking processes. The Park Service will report the results of the internal review to the public. To help ensure an independent and impartial review, the inquiry will be conducted by National Park Service personnel who were not involved in the dog management planning process.

Further action under the National Environmental Policy Act and the rulemaking process for the Dog Management Plan will await the findings and conclusions of the independent review.



Second Thoughts • By Jack Kaye

The Obama Legacy

When a young junior senator from Illinois ran for president in 2008, he promised to bring us hope and change. Now eight years later, what is his legacy?

He promised to get us out of the Middle East after his predecessor invaded Iraq based on false information cost us thousands of American lives and trillions of tax dollars. He got us out of Iraq as promised and made plans to get the Afghans to take over protecting their country from radical Muslims called the Taliban. He made it clear that this was not anything against Islam, a religion dedicated to peace. The Afghans are still not able to protect their people against the Taliban and need some of troops to stay to help.

He promised to make healthcare coverage affordable and voluntary. He wanted to have a public option to complement or compete with private carriers. No longer would applicants be denied coverage for preconditions.

We did get a healthcare reform but it was not the one he wanted or promised. Americans without coverage would be forced to get it or face financial penalties. Healthy Americans were needed to offset the cost of unhealthy ones, we were told. There would be no public option. Those who could not pay would be subsidized by the government. This was not what he wanted but was persuaded by the House leadership under Nancy Pelosi that this was the only way.

The Affordable Care Act was neither affordable for the middle class nor did it provide care until the premiums and the deductibles were met. Sometimes this meant that in addition to paying \$6,000 a year for the insurance, there was a deductible of as much as \$5,000 to \$10,000 a year, meaning that this was not coverage but rather insurance for any amount above the combined annual cost. Private insurers were dropping out because they were losing money. They became aware that one unhealthy patient could cost as much as 50 or 100 healthy ones. There would be no way to have the healthy ones make up the difference.

The president, his health secretary and his minority leader in the House, Nancy Pelosi, were advised that there was an easy way to fix this deteriorating situation. They could make enrollment voluntary and allow private insurers to reject any applicant for medical or financial reasons. Those rejected would be immediately eligible to the public option, which would be more like Medicare than Medicaid. Those denied for medical reasons would have a share of cost but no deductible and those denied for financial reasons would have little or no share of cost and no deductibles. This then would be affordable health coverage as opposed to unaffordable health insurance. States could not block the federally funded public option meaning the people in 19 states that did not expand Medicaid would have medical coverage.

He and his people rejected all solutions and insisted on pressing on no matter what.

He was facing an economic collapse and took steps to save the banks and two of our car companies, one of which is now owned by the Italian carmaker, Fiat. He helped the private sector create 16 million jobs that were lost during the crisis. The unemployment rate went from more than 10% with 800,000 jobs lost each month to a rate of almost down to 4.5% with more than 200,000 jobs added each month for a record number of months. The stock market went from 6,000 to almost 20,000. But he gave up on getting back any of the manufacturing jobs we lost through outsourcing. His people claimed the low skill manufacturing jobs were lost forever and blamed automation instead of outsourcing.

He advocated raising the federal minimum wage to at least \$10.10 per hour from its current \$7.25 per hour rate. Since then many cities and states have raised their

minimum rates to as high as \$15 per hour. Average worker incomes have increased by almost 3% as a result.

He had appointed his former Democratic opponent, Hillary Clinton, a former First Lady, to be Secretary of State in 2009. She promised to reset our frosty relationship with Russia and to champion human rights, especially in the Middle East where women and minorities were being subjugated. Encouraged by the fall of Iraq's strong man and then by the overthrow of Tunisia's dictator, she promoted efforts in Egypt, Libya, Yemen and Syria to overthrow their longtime dictators, thus interfering with the internal politics of their countries. What followed was the destabilization of Iraq, Yemen, Egypt, Libya and Syria. This chaos gave rise to radical Islamists known as Al Qaeda and later ISIS in this area. Our relationship with Russia has never been worse.

He promised to close Gitmo and did much to reduce the population there but was prevented by congress from moving the remaining prisoners to available American prisons. Those who remain there are costing an estimated \$10 million a year each.

He promised to unite us saying that there was not a red America or a blue America, no white America or black America. We would be one nation, indivisible. Eight years later, the country is more divided than ever.

When a young high school football player was killed by a neighborhood watch volunteer, the president sided with the young man saying that it could have been him as a young man or his son had he had one. It turned out that the young man was killed to stop him from beating the volunteer to death all because the man had asked him what he was doing in the gated community.

When a police officer shot and killed a six foot five inch, 300 pound former high school football player, the president again sided with the young man who was killed. It turned out that he too was killed in self defense and did not have his hands up when he was shot. He was trying to kill the officer who stopped him for having committed a strong-arm robbery minutes before. The president did not intervene and the town rioted for more than four months.

Whenever cases like these came up, it seemed that President Obama sided with the assailant rather than the police who risk their lives daily to protect us. It happened again in Staten Island when a six foot five inch 400 pound man with severe heart, kidney and diabetes problems resisted his 30th arrest. He died of a heart attack while police tried to arrest him.

It happened again in Baltimore when a young drug dealer reacted to his 20th arrest of the year and hit his head accidentally while being transported to jail. The mayor of that city immediately decided that the police were guilty and awarded the young man's destitute mother \$6.5 million before the case went to trial. It turned out that none of the six cops were found guilty. In the next six weeks there were 56 homicides. All but one victim and one killer were black. That year there was a record number of homicides almost all affecting black victims.

His siding with alleged victims of police overreach resulted in a 50% increase in homicides of police officers making some police less motivated to aggressively pursue the criminal element. The result in the president's own Chicago neighborhood has been a dramatic increase in murders to almost 800 this year with 78% of the victims being black and 17% being Latino.

But this past year, the president

Cont. p. 17

Do you have a pinched nerve? We can help.

Dear friend,

It's hard to believe, I know, but it's true. Last year more Americans were killed by prescription drugs than by guns, AIDS, suicides and terrorists combined...But we'll get to that in a minute.

Let me start by explaining the photo in this letter. You know when I meet people in town they usually say, "Oh yeah, I know you, you are Doctor Meakim. You have been on the corner of Beach and Jones for years"...(and we just moved to our new office on Clement Street). Well, that's me. I'm also the woman hugging her niece at the jersey shore in the picture.

17 years ago something happened that changed my life forever. I was a young woman living in Philadelphia when it happened. I was driving with a friend when she missed a stop sign and rammed into the side of another car. We were all shaken up. The police were called and we all went to the hospital. No one was bleeding, so the doctors took some x-rays of our neck, gave us pain meds and sent us on our way. The next day I woke up with pain everywhere and it just kept getting worse. For years I tried everything that I could find. For an escape from the pain, I went to medical doctors, physical therapists, acupuncturists, I tried special pillows, and anything I thought might help. I spent a lot of time and money. Along the way I had two more car accidents and the pain kept getting worse and worse. I had developed fibromyalgia, neck pain, mid-back pain and low-back pain with tingling and numbness down my right arm and leg. I was scared that something was really wrong with me. This could not be normal. I was only 33 years old and felt like I was 100. That is when someone told me about a chiropractor that they thought could help. As a matter of fact, after the first person told me about him, two more people did that same week. So I made an appointment with the chiropractor. Thank goodness that they took the time to help me! I went to his office where he asked me about my problems, did an exam, and took some x-rays of my head and back. After that he pointed out where my nerves were pinched and adjusted them. The adjustment was so light I barely felt it. I began crying as I felt the pain leave my body for the first time in years. It may sound strange, but I was so happy and grateful for the relief that I still thank him every day! After that, I knew what I had to do. I had to become a chiropractor, and that's how it happened!

I have adjusted many children within the first 15 minutes after birth. They obviously didn't complain of neck pain or back pain; I adjust them to keep them healthy... as with all the hundreds of children I care for in my office.

You see, it's not normal for kids to get ear infections, asthma, allergies or a number of other illnesses we see clear up in our office everyday.

When the nervous system is working correctly your internal resistance and healing powers are enhanced.

A healthy family does NOT rely on medication to make them well. My family does not turn to medication to seek health and we don't have a "medicine chest" in our home. Due to years of advertising saturation from the pharmaceutical companies most Americans do seek health from outside- in and most families have a "medicine chest" filled with an average of 16 different medications.

In an average year, the World Health Organization (WHO) reports over 1.5 million hospitalizations due to medication.

Last year the WHO reported 350,000 deaths due to medication people took... and 160,000 were when the drugs were prescribed correctly. More people died last year from medication than at Pearl Harbor and Vietnam. Amazing huh?

If drugs make people well, then those who take the most should be the healthiest, but this simply isn't the case.

Many people are beginning to understand that health comes from within. This is why chiropractic helps so many

people. You see, your body can heal itself. Your body doesn't need any help; it just can't have any interference. With chiropractic, we don't add anything to the body or take anything from it. We find interference in the nervous system and remove it thus enhancing the healing capacities of the body.

We get tremendous results... it really is as simple as that.

For the past eight years, people from San Francisco and the surrounding area have come to see me with their pinched nerve problems.

- Headaches
- Migraines
- Chronic Pain
- Neck pain
- Shoulder/arm pain
- Whiplash from car accidents
- Backaches
- Numbness in limbs
- Athletic injuries just to name a few.

Here is what some of your neighbors have said:

"I had back pain for 15 plus years and two back operations. Now I play tennis, sit at my computer and enjoy an active pain free life! Thank you Dr. Meakim!" — A. McGrath

"All possible medicines and doctors, you made a miracle taking away my pain!! I am a happy wife and mother again!" — L. Igudesman

"I have had chronic neck, shoulder and arm pain for the last 4 years. After seeing Dr. Meakim I can now twist off caps, button/zip my own pants and there is no longer a need for me to ice my arm in the morning and night! I feel more energetic, and can move my arm and neck pain free!" — C. Brubaker

My qualifications:

I am a graduate of Palmer College of Chiropractic, I have published articles in leading chiropractic journals and taught chiropractic to chiropractors! I've been helping your neighbors in San Francisco since 2004. I've been entrusted to take care of tiny babies to athletes that you may know.

My assistants are Miranda and Nancy and they are friendly and helpful and ready to assist you to set up an evaluation. Our clinic is both friendly and warm and we try our best to make you feel at home. We have wonderful service at an exceptional fee. Our clinic is called Healthy Life Chiropractic and it is at 101 Clement Street (at the corner of Clement St. and 2nd Avenue). Our phone number is 415-751-7071. Call today for an appointment. We can help you.

Thank you. — Dr. Christina Meakim D.C.

P.S. When accompanied by the first family member, I am also offering the second family member this same examination for only \$17.

P.P.S. Can you imagine not having to wait at a doctor's office? Well, your time is as valuable as mine. That's why we have a no-wait policy. You will be seen within minutes of your appointment.

P.P.P.S. Of course, all people respond differently to care.



WEST OF TWIN PEAKS PROPERTIES SOLD SINCE 11/1/16

FACT: INVENTORY HAS NEVER BEEN LOWER WHEN COMPARED TO BUYER DEMAND

ADDRESS	TYPE	BEDS	BATHS	PK	ASKING	SOLD	%OF ASKING
776 Victoria St	Ingleside Terrace	2	1.5	1	1285000	1350000	105.06
155 San Aleso Ave	Balboa Terrace	3	3	2	1499000	1565000	104.4
23 Lansdale Ave	Sherwood Forest	4	3.5	2	1595000	1700000	106.58
2 Allston Way	West Portal	3	2.5	1	1625000	1830000	112.62
76 San Rafael Way	St. Francis Wood	3	1.25	3	1750000	2300000	131.43
754 Ulloa St	West Portal	4	3.5	2	2598000	2600000	100.08
129 Terrace Dr	St. Francis Wood	4	3.5	2	3,300,000	3,300,000	100

kw LUXURY HOMES INTERNATIONAL
KELLER WILLIAMS® REALTY

Jennifer Rosdail

REAL ESTATE
HOMES | HOODS | INVESTMENTS

DRE# 01349379
415.269.4663
www.Living415.com
jennifer@rosdail.com

Remember When?



The El Rey theater located at the corner of Ocean Avenue and Lakewood. Dec. 4 1942 Photo published by permission of the San Francisco History Center, San Francisco Public Library

El Rey Theater (Cont. from p. 1)
the low-rise development of the surrounding Oceanview/Merced Heights/Ingleside (OMI) district, the stepped, 150 foot tower was originally capped by an aircraft beacon. It ceased being a theater in 1977.
The building is individually eligible for Article 10 Landmark designation as a 1930s era neighborhood theater that embodies the distinctive characteristics of its type, period, and method of construction. It was built by

San Francisco movie theater impresario Samuel H. Levin, and named El Rey – “The King.” The former theater has been in use as a church since 1978, and continues to be the neighborhood’s foremost visual landmark.

Architect Timothy Pflueger is one of San Francisco’s top 20th century architects. He designed and remodeled approximately 10 movie theaters in Northern California between 1922 and 1933, including the Castro, Alhambra, Royal, El Rey, and New Mission Theaters. He practiced within the “Mayan Deco” style, but El Rey is one of only three in the city that retains its original Pflueger-designed auditorium – the others being the Castro and the Alhambra.

At the hearing for the designation, Alex Mullaney, publisher of the Ingleside Light, told the commission that the El Rey “is the linchpin for revitalizing Ocean Avenue.”

John Goldman of Goldman Architects spoke for the new owners, a joint venture between Ricci Ventures and Green Point Land Co., both Marin investment groups. Although plans for the building are not yet firm, Goldman assured the commission that he is a “huge Pflueger fan,” and that his goal, “along with the owners,” is to “restore the building.” Using “original Pflueger drawings, which all exist,” he said. “A lot of the original detail still exists, it has been covered over by the really bad renovations, and the storefronts are not the way they should be, the

marquee is gone, the tower—all the coolest art deco and moderne details have either been hidden or removed.” He hopes to restore the building to “the way it was in 1931—to the extent possible.” He further ensured the commission that “I love the building, the owners love the building and we are going to do right by this building.”

Rumors that the new owners, who paid only \$1.06 million for the property, had expressed interest in demolishing the place to build apartments were not expressed at the public hearing.

If all goes as planned, the El Rey will be confirmed in a Landmark Designation in about six months by the Commission, then it will go to the Board of Supervisors for final confirmation.

BRAIN FÜD

See if you can think of a word to fill in the blank that would result in a meaningful acronym (i.e. the acronym is a word that relates to what the acronym stands for). For example (based on a real company name): Portable On Demand _____ = POD_

Answer: “Storage” goes in the blank, which gives the acronym PODS. The company transports mobile storage containers (pods).

1. Casually Have A _____ = CHA_
2. _____ Related Other Sons = _ROS
3. The Ultimate _____ Store = TU_S
4. Justice Administered In _____ = JAI_
5. _____ Everyone Achieves More = _EAM
6. Hanging Onto Positive _____ = HOP_

Answer

6. Expectations -> HOPE
5. Together -> TEAM
4. Lockup -> JAIL
3. Bath -> TUBS
2. Biologically -> BROOS
1. Talk -> CHAT

EL REY

THEATRE

OPENS TONIGHT

The Beacon's Rays Will Guide You

EL REY—"THE KING"

A New Monarch in the New Show World

OCEAN AVENUE AT VICTORIA STREET
WEST OF TWIN PEAKS

SAN FRANCISCO'S NEW THEATRE MODERNE, a half-million dollar structure, follows the new trend throughout the United States by offering a theatre worthy of Market Street, located in the great West of Twin Peaks residential district.

In surroundings of unmatched beauty and the utmost in luxurious comfort, golden hours of entertainment will be provided for the people of all San Francisco. El Rey is accessible by half a dozen boulevards and two major car lines, No. 12 Ingleside and the Municipal "B" car, via Twin Peaks Tunnel. (See map on opposite page.)

Messrs. J. R. Miller and Timothy L. Pflueger were the architects for El Rey. They have erected, with the help of H. L. Petersen, general contractor and a score of sub-contractors, another milestone in the forward march of entertainment. They have joined science and art to bring to the people of San Francisco the last word in entertainment.

Every seat in El Rey has been made in order for the greater comfort of its patrons. Full padded, heavily upholstered seats were designed by The American Seating Company and installed by M. G. Perlin, seating engineer. Mechanical equipment is of the latest type approved for theatrical use. Heating and ventilating are entirely automatic, assuring a never-varying supply of fresh air at a fixed temperature.

Served Adjuncts to the Chain of
SAN FRANCISCO THEATRES, Inc.
1015 Broadway, San Francisco
Adm. R. Louis Entertainer and Manager of Theatre Operations.

El Rey
Culicason: Alexander
Hendling
General mgt. and O. J. HODGINS, Inc.

Telephone
Evergreen 9400
For All Theatres

Painting & Decorating
AMERICAN PAINTING & DECORATING CO.
503 Howard Street

Electrical Work
ALTA ELECTRIC & MECHANICAL CO. Inc.
204 Howard Street

PARCO PAINTS
Used Throughout - Distributed by
STANDARD DISTRIBUTING CO.
1143 Mission Street

Special Furniture Designed and Created by
B. F. SHEARER COMPANY
San Francisco - Los Angeles

Carpets & Furnishings by
D. N. & E. WALTER & CO.
542 Mission Street

Architectural Shop Metal Work
AETNA SHEET METAL WORKS
527 Clementina Street

MARCONI PLASTERING CO.
1735 Beach Street

Lighting Fixtures by
BOYD LIGHTING FIXTURE CO.
278 Post Street

GOLDEN GATE ATLAS MATERIALS CO.
15th & Harrison Streets

Plumbing by
WILLIAM J. FORSTER CO.
221 Oak Street

Curtain Cloth and Window
PROGRESS GLASS COMPANY
1422 Polson Street

WESTERN THEATRICAL EQUIPMENT CO.
116 Leavenworth Street

LEE HARDWARE CO. Inc.
231 New Montgomery Street
Distributors for
Rauscher Builders' Hardware

Decorative Tile
ART TILE & MANTEL CO.
221 Oak Street

THE FRANCIS-VALENTINE CO.
715 Eighth Street

Peerless Ornamental
IRON & BRONZE CO. Inc.
1525 Polson Street

H. L. PETERSEN
231 Treat Avenue
General Contractor
New Signs and Marquee
BRUMFIELD
ELECTRIC SIGN CO.
864 Union Street

Blue Cross
"I Surrender" Act

OPENING WITH
MAURICE CHEVALIER

THE SWILING
LIEUTENANT

Doors open 6 p.m.
No Reserved Seats

OPEN LATE

I'd like to buy a bag of ground coffee please.

We don't sell ground coffee. Only whole beans. We do this because every minute after you grind the bean, it loses its flavor. You can buy the beans here and grind them at home the instant before you brew.

Oh, well can I just get a cup of coffee then? I like dark roasts usually.

We don't believe in dark roasts. We only serve four varieties of blond roasts.

By Julie Casson

Obama Years (Cont. from p. 15)

really went off track. He decided to enter the presidential race to promote his chosen successor, Hillary Clinton. Unlike any sitting president before him, he went on the campaign trail for her, along with his wife, Michelle, and his Vice President, Joe Biden, presumably using taxpayer money for the tremendous expense it entailed. Truman did not campaign for Stevenson. The very popular Ike did not do it for his own vice president, Nixon. Reagan did not do it for his V.P. Bush. Clinton did not campaign for his V.P., Gore. Young Bush did not campaign for Romney.

The president insisted that Hillary was the best prepared to be president, more than anyone ever was. He forgot that Bush Sr. had been Vice President for eight years, head of the CIA, a congressman and a war hero. He forgot that Nixon had been a V.P. for eight years, a congressman and naval officer. How well did they do?

The president promised that Mr. Trump would never be president. He then had to eat his words. When a minority of Americans tried to undo the results of the election, he did not step up

and tell them that what they were doing was un-American and was an assault on our democratic system. As a result, some Americans felt encouraged to do whatever they could to overthrow the results.

He had tried to reduce the number of immigrants who came to the country illegally until a few years ago when those on the left decried it. He then allowed and encouraged hundreds of thousands of interlopers from Central America to enter the country unimpeded and to disperse into the American countryside with hopes of future citizenship.

And just this past month, he gave Israel, our country's greatest ally and the homeland for the world's most besieged people, a knife in the back by instructing his U.N. representative to not veto a resolution that every other administration had.

The president's legacy is both great and unfortunate. He overcame great obstacles but put others in his way. Many of us voted for him and believed in him. He has left us with a mixed legacy.

Feedback: kaye@westsideobserver.com

Education Carol Kocivar ©2017

Flush with Cash



In his inaugural address, President Trump said that America's public schools are "flush with cash". Let's take a look at what "flush with cash" really looks like.

The President has enrolled his son, Barron, at Columbia Grammar and Preparatory School, a private school in New York City. How does it compare with an average California public school?

Barron's Private School	California Public Schools
Tuition \$45,000	Per Student Funding State Funds: \$10,579 Total: About \$15,000 incl. federal and local
Class Size Grades 2-4 20 students with 2 teachers Grades 5-12 12 to 17 students	Class Size Elementary 25 students with one teacher Middle and High School About 30 students
Library Staff Available for all students	Students per librarian 7,896 to 1
Counselors College Counseling Program	Students per Counselor 792 students to one counselors
After school enrichment Available for all students	After school enrichment Limited to non-existent
Student Support "Social workers, school psychologists, and counselors at every level."	Student Support 1 Social Worker per 12,870 1 Psychologist per 1,265
Summer School Available	Summer School Limited
Curriculum includes: Arts, music, swimming, yoga, drama, dance, chess, technology	Curriculum Varies: Schools struggle to provide students with broad options
Teacher Salaries Average above \$100,000. (plus fully paid health insurance)	Teacher Salaries Average \$72,868 (minus varying employee contributions for health insurance)

Seriously? Which school is "flush with cash"? Based on this data, it certainly is not a California public school. On a cost-adjusted basis, our school system consistently ranks among America's most poorly funded.

Shouldn't all children have the opportunity for a tremendous public education? For more information about education, visit Ed100.org

Carol Kocivar lives in the Westside. kocivar@westsideobserver.com

Sudoku-fun!

Rules:
Each puzzle is a 9 by 9 grid of squares divided into nine 3 by 3 square blocks, with some of the numbers filled in for you.

The Object:
Fill in the blank squares so that each of the numbers 1 to 9 appears exactly once in each row, column and block.

Answer: appears Below.

9	1	4	8	2	5	7	3	6
2	2	5	6	4	9	8	1	3
8	6	3	5	1	2	4	9	7
1	9	8	4	6	5	3	2	7
5	4	6	2	3	7	9	8	1
3	2	7	9	8	1	5	6	4
4	5	1	3	9	6	7	2	8
6	3	9	7	2	8	1	4	5
7	8	2	1	5	4	6	3	9

			9	5	3			
	8				2			
3	5					2	9	
4		6					2	9
				9				
7	9					5		6
	6	2					5	7
			5				3	
			8	2	4			



SRG
SENIOR
LIVING

A little help. A big difference.

The assisted living services at Peninsula Del Rey Senior Living Community are about the whole family and the whole YOU.

Of course, we can help you with your daily needs. But did you know you will also have options for fitness, socializing, healthy fine dining, and more? And services are tailored to you, so you'll get just the right amount of help you need, when you request it.

But the best part? No matter if you need a little help or a lot, the difference you'll feel will be amazing. Please call Peninsula Del Rey to schedule your complimentary lunch and tour.

PENINSULA DEL REY

INDEPENDENT & ASSISTED LIVING RESIDENCES

165 Pierce Street • Daly City, CA
PeninsulaDelRey.com • 650.468.2854

Conveniently located between San Francisco and the Peninsula with easy access to Highway 280 & 101



Thu. February 16 | 1- 3 pm Reception | McLaren Lodge | 501 Stanyan Street

Richard Rothman: The Mothers Building

Richard Rothman's photographs of the historic murals of The Mothers Building at the San Francisco Zoo depict the story of Noah and the Ark and were painted by Works Progress Administration (WPA) artists Helen Forbes and Dorothy W. Pucinelli. The Mothers Building is the only building in San Francisco where all of the WPA art work was done by women artists. For more information, please visit the Harvey Milk Photo Center website.



Why do you do things you
later regret?

Find out

BUY AND READ

DIANETICS

The Modern Science of Mental Health

by L. Ron Hubbard

PRICE \$25.00

701 Montgomery Street
San Francisco, CA 94111
1(800) 801-3944
www.dianetics.org

©2017 CCSF. All Rights Reserved. Dianetics and Hubbard are trademarks and service marks owned by Religious Technology Center and are used with its permission.

HAIR SALON AND BARBER SHOP

STERLING ART-CHI-TECH
650-735-5731 / 650-219-5776

Stations Available
— Enhance Your Image —

Health Matters • By Sharone Franzen

Procrastination and Other Tricks

By Sharone Franzen



Now that the new year is well underway, many people may concede that they have thus far not started or accomplished their New Year's resolutions. Promises made to oneself or one's family to lose weight, save money, or learn Italian have by now fallen flat, to be replaced by that creeping feeling that time is slipping by. "I can't believe it's already February!" is a common refrain, followed by a sigh or admission of some failure to live up to New Year expectations.

One of the problems with deciding to transform one's health / finances / waistline overnight may be that waiting until after the holidays to make changes is an institutional form of procrastination. Everyone, it seems, goes through December spending too much money and eating too many cookies, and the ensuing resolution-making feeds whole industries. So the question becomes: how can we see this insidious pattern coming down the road next time, so that we can avoid it? Can we face our shortcomings *before* they become a big end-of-the-year mess?

Imagining what things will be like a year from now would be a good place to start. It's likely that without a plan in place, next year will have a shocking resemblance to this year. The flipside to procrastination is impatience, which may impose the real

can worry about your mid-morning crash later. Lunch is just as hurried, and there are you are again in the afternoon: tired, with no energy to wonder how the vicious cycle will end.

If you want to get off of this horrible merry-go-round, a few small changes can create a healthier domino effect. The root of the above issue of exhaustion is really lack of sleep and proper nutrition, which are inexpensive to fix; it just takes a bit of forethought. The best time to work on that flagging afternoon energy is actually the night before. After a healthy dinner, chop up a few veggies, or set aside some leftovers, and pack them for your lunch the next day. Then start your nighttime ritual (hot shower? yoga stretches? reading a book?), and get to bed a bit early. When you wake up refreshed in the morning,

“Instead of falling short of losing twenty pounds, the game could change to counting how many days you can go without eating any cookies, or chips, or Cheez-Whiz. Then each day can be a victory.”

obstacle to our goals. If we are honest with ourselves, we'll admit that our main deterrent from starting a large project is that it takes too long to enjoy the rewards. It takes a feat of imagination to see an entire novel when faced with that first empty page, or to imagine oneself as twenty pounds lighter when confronted by a plate of brownies. The goal visualization is pretty, but our Microwave Generation needs to work within the limits of a short attention span. Thus we have the persistence of weight-loss pills and get-rich-quick schemes.

The way around our inertia is to trick ourselves into achieving smaller goals. Instead of falling short of losing twenty pounds, the game could change to counting how many days you can go without eating any cookies, or chips, or Cheez-Whiz. Then each day can be a victory. The immediate payoff may not have the drama of the ubiquitous before-and-after-the-diet photos, but by December of this year, you may have made a lasting change.

Many health concerns can be addressed with this bit-by-bit approach. Say, for example, that you find yourself feeling devastatingly tired in the middle of one too many afternoons. You need a late cup of coffee just to get through the rest of your workday, and you find yourself getting takeout yet again because you don't have the energy to make dinner. And since you didn't get much done during the afternoon, you keep yourself up late answering emails, thus forcing yourself to lose sleep in the name of productivity. The next morning starts with the snooze button and double-parking in front of the coffee shop for your latte and chocolate-chip muffin – you

you can substitute your ultra-caFFEinated coffee beverage with some green tea, and skip the late-morning crash. Be amazed at how much you can get done when you are well rested, and enjoy the lunch you brought from home instead of running out for something that does not charge your nutritional batteries. By mid-afternoon, you'll get your second wind, so that by the end of the day you won't be left with piles of work to do when you get home. Once again you can get to bed early, and thus the cycle eventually gets re-set.

Of course, there may be times when do-it-yourself fixes aren't enough, and you need some help with some aspects of your new plan. Difficulty in falling asleep, or crazy food cravings may require professional help. However, this too should not be put off. Healthcare providers who take a detailed health history can pinpoint the moment in a person's life when a chronic issue had its start, and it is oftentimes months or years before the person sought help – making it all the harder to treat. That old "ounce-of-prevention" adage is true: get help if you don't get results by yourself in a few weeks. Pain should work itself out in a week, weight should come off slowly but steadily, and the time to treat springtime allergies is actually in winter.

This strategy can be used for all of the commonly made resolutions, with the *uncommon* result that you may actually reach the goals you've set for yourself. Start small, get help, be patient. Next year you'll hardly recognize yourself!

Sharone Franzen is an acupuncturist and herbalist in the Lakeside Village neighborhood.

Police Report (Cont. from p. 9)

when somebody pulled her out by the hair and punched her. She believes she heard somebody telling her not to get divorced. When she recovered, they were gone.

Robbery

10:27 pm | 2300 Noriega St

A robbery victim said he saw a suspect, with a known history, hide merchandise in his jacket before leaving the store. When he attempted to stop the suspect he was punched multiple times and fell and sustained injuries before the suspect fled.

Sun • Jan 15

Battery

6:11 pm | Ocean Ave & Lee Ave

A business owner, asked the suspect, who was harassing customers to leave but he hit the owner three times before leaving the restaurant. Officers cited and transported him for detention due to violent behavior.

Driving Under the Influence – Arrested

11:12 pm | 28th Ave & Santiago St

Officers stopped a reportedly erratic vehicle and found the suspect slumped over the steering wheel. After failing several sobriety tests he suspect was arrested.

Embezzlement – Theft

1:25 pm | 3200 20th Ave

Cont. p. 19

Real Travel By Sergio Nibbi



Over and Out

Our planet as we know it is encrusted with computers, smart phones and tablets. Communication is instantaneous. Write a few words, push a button and your message travels around the world in milliseconds. That I-phone in your pocket is more powerful than all the computing power that put the first man on the moon. But not that many years ago communicating was much more complicated, using smoke signals, colored flags or rooms full of equipment attached to antennas of various sizes with complete dependence on atmospheric conditions.

...along with numeric codes used at the end of a conversation. It wasn't just "thank you and goodbye" but 73's, and 88 was used for "love and kisses" but the best one of all was 807 to describe a cold beer."

As a teenager I got involved in Amateur Radio (known as Ham Radio). My grammar school graduation present was a Hallicrafter short wave radio receiver which was larger than the proverbial bread box. With that came many books and hours of studying while preparing for a Ham Radio license that would allow me to converse with other Ham Radio operators around the country and hopefully around the world. After taking the first test I received my Amateur Class license where I could finally be on the air, although the transmissions were limited to the use of Morse code and the frequencies allowed were highly restricted and very limited in power.

I vividly remember my first contact, my call sign, WN6NLQ, the "N" designating my amateur status. I still have a crude recording of that first contact and what a thrill it was. I then had six months to prepare for my General License and the first requirement was being able to send and receive Morse code at a minimum of 15 words per minute, after which came the written exam, which were both given at the FCC office in downtown San Francisco.

With my General license I could now communicate with the spoken word and have access to a larger range of frequencies and with a lot more power. CQ, CQ, CQ,

but eventually I installed a huge antenna mounted on the side of our house that could be raised and lowered and rotated 180 degrees depending on the frequency used and again those atmospheric conditions that were so paramount to a successful contact. Sometimes you could "work" Alaska or Hawaii and within a few minutes you could hardly reach San Jose!!

In looking over my log book, my contacts were scattered all around the country and around the world. Once I had worked all 50 states I got a certificate from the American Radio Relay League confirming that I had "Worked All States" and eventually got a "Worked all Continents" certificate as well. Was Russia one of my contacts? I don't remember, but I doubt that Vladimir Putin would have been on the air at that time, he wasn't even born then!

Like countries around the world, Ham radio operators have a language of their own. There's an abbreviation for just about anything, and the jargon is paramount to learning a new language. QSL cards, CW for Morse code, DX for long distance, QTH for location, OT for an old man and YL for a young lady operator along with numeric codes used at the end of a conversation. It wasn't just "thank you and goodbye" but 73's, and 88 was used for "love and kisses" but the best one of all was 807 to describe a cold beer.

So now here we are in the world of texts and twitter. Perhaps our newly elected President should consider a simpler method of reaching out to his minions. White smoke could be a solution, after all its good enough to elect a Pope and it should be good enough for a President. They have plenty of antennas on the White House roof that they can use. Perhaps he could tap into one of those and transmit in Morse code. He could vent all his frustrations and besides, 99% of the people wouldn't understand what he's saying anyway. Now the only issue remaining would be his call sign, after all President Obama has his own call sign, NOBMA. But just remember it can only be a combination of 5 or 6 letters and numbers and it better be good lest we get a tweet in the middle of the night.

73's and 88's from this OM in his QTH who's headed for a cold 807? Over and Out.

Sergio gets around—the world. Feedback: sergio@westsideobserver.com



this is WB6NLQ. That was the standard protocol to request a response from anyone hearing my call. Hopefully someone would reply and the contact started. The conversations were usually very generic and a bit nerdy. What type of equipment are you using? How much power on your rig and what is the signal strength on both ends?

The biggest treat at the end of the contact was exchanging penny postcards known as QSL cards, with your call sign, location, date, and signal strength. We were also required to maintain a log book of all our contacts with the same information. My basic equipment gave me a good start



Police Report (Cont. from p. 18)
Officers met with the supervisor who reported that he found a discrepancy in deleted items from a register. He also found that the suspect had stolen multiple items without a security sensor attached to them and also removed sensors to give items to friends. She was cited.

Mon • Jan 16

Battery
7:44 pm | 300 Serrano Dr
A woman said a suspect ran into the elevator that she had just gotten into. When she was about to exit the elevator, the suspect put her arms around her neck for a few seconds but did not get a good grip. When she screamed the suspect fled into a stairwell. Officers were unable to locate the suspect.

Wed • Jan 18

Theft from a Vehicle – Possession Stolen Property
9:28 am | 300 St Francis Blvd

The victim saw the suspect looking into vehicles and trying to open doors. When the suspect entered a vehicle and exited with several bags before fleeing the scene. Responding officers located the suspect and after further investigation, the suspect was cited.

Thu • Jan 19

Battery
5:40 pm | 2200 Lincoln Way
The victim stated that there was a past history of parking issues between himself and his neighbor. In this incident, the neighbor blocked the victim's driveway causing the him to temporarily park on the sidewalk to unload his groceries. The neighbor then knocked on the victim's door and lunged at the victim, attempting to punch him.

Editor's Note: This is an incomplete report as space allows. For the entire report go to: www.taraval.org



So much to see. For free.

We're inviting all San Francisco residents to explore the Academy for free. Come see the world's only aquarium-planetarium-rainforest-living museum! To learn more visit calacademy.org/free.

NEIGHBORHOOD	SF ZIP CODE	SPRING 2017 FREE DAYS
Bernal Heights, Castro, Cole Valley, Glen Park, Haight, Lake Merced, Mission, Noe Valley, St. Francis Wood	94110, 94114, 94117, 94127, 94131, 94132	February 10, 11, 12
Parkside, Sunset	94116, 94122	March 3, 4, 5
Chinatown, Marina, Nob Hill, North Beach, Presidio, Richmond, Russian Hill, Seacliff, Telegraph Hill, Western Addition	94108, 94109, 94115, 94118, 94121, 94123, 94126, 94129, 94133	March 10, 11, 12
Bayview-Hunters Point, Downtown, Hayes Valley, Ingleside-Excelsior, Mission Bay, Potrero Hill, SoMa, Tenderloin, Treasure Island, Visitation Valley	94102, 94103, 94104, 94105, 94107, 94111, 94112, 94124, 94130, 94134, 94158	March 17, 18, 19

Each visiting adult must show a valid photo ID with proof of residency. The following items or combinations are acceptable: a driver license or state ID card, photo ID plus postmarked envelope, postcard, or magazine label with name and date, photo ID plus utility bill (gas/electric/cable), bank statement, or letter from a government agency with name and home address (not a P.O. Box).

Generously supported by 



CALIFORNIA ACADEMY OF SCIENCES
Golden Gate Park





Their Shared
VISION

Olivia and Jim decided that San Francisco Towers not only is the most appealing Life Plan Community, but also offers an address central to the best of the Bay Area. After all, with children and grandchildren in California and a teaching history that includes Stanford and UC Berkeley, their choice was perfectly clear. They think the view from our rooftop garden is pretty spectacular, as well. To learn more, or for your personal visit, please call 415.447.5527.



San Francisco Towers

The life you want, in the city you love.

1661 Pine Street San Francisco, CA 94109
sanfranciscotowers-esc.org



A not-for-profit community owned and operated by Episcopal Senior Communities.
License No. 380540292 COA #177 EPSF752-01FF 011617

**Better Care
Starts With
Robert's Support.**

Lean on Robert. No matter what level of home care you need, Robert, our Home Care Supervisor, and his highly trained caregiving team stand ready to help your loved one have a safer, healthier, and more independent life.

See why we're the Bay Area's leading expert in senior care.

Free consultation
415.449.3777
SeniorsAtHome.org



SeniorsAtHome
Better Care Starts Here

A Division of Jewish Family and Children's Services
San Francisco • Peninsula • Marin • Sonoma County
HHA License 220000378

Robert Lovelace, RN
Home Care Supervisor

